



CONGREGATION BETH EL OF MONTGOMERY COUNTY

CHESHVAN 10 5753

OUR 42ND YEAR NO. 5

NOVEMBER 6, 1992

Off The Bimah

On Selichot Eve we had the pleasure of welcoming and introducing our new Youth Director, Rachel Berlin. Rachel is a marvelous addition to the Beth El staff — a suitable complement to Ellen, Cantor Lubin, Steve, and Louis — bringing verve, vitality, and tremendous enthusiasm to her position.

I am delighted by the opportunity to work closely with Rachel in the months ahead, and will encourage her to begin to work with the entire staff on a number of pressing challenges, including:

- Maintaining synagogue connections with our college students.
- Reaching out to the children who are not involved with a synagogue youth program.
- Bridging the gap between our youth in the religious school, day schools, and public and private schools.
- Restoring the youth program to a position of prominence while integrating it into the life blood of synagogue religious, cultural, and educational activities.

These and other challenges must become of signal importance and of special concern to all of us in the year ahead.

We are fortunate to have on our staff a young woman who will stimulate and encourage our youth to identify and maintain ties with their congregation.

Now, Rachel, having read all this, are you ready for us? And, more importantly, are we ready for you?

Rabbi Jonathan Z. Maltzman

Join Rabbi Jonathan Maltzman on a Beth El Mission to Israel, June 27 - July 11, 1993. Watch for further details. An organizational meeting will be announced shortly.

All In The Family

Elliott J. Millenson, son of Charlotte and Roy Millenson, has been named president and chief executive officer of Pollenex Corporation, a Chicago-based manufacturer.

Mazal Tov to Elaine and Roy Becker on the birth of their grandson, Scott Alexander Schuler, on August 19th. The proud parents are Wendy and Jay Schuler. (*Editor's Note:* This announcement was supposed to run in Issue 42-3, we apologize for inadvertently leaving it out.)

**CONGREGATION MEETING, November 10,
1992 at 8:15 p.m. in the Social Hall.**

Shabbat and Festival Schedule

Friday, November 6th, at 6:30 p.m.

Saturday, November 7th, at 7:30 and 9:15 a.m.

Havurah Minyan, at 9:00 a.m.

Corinne Schneider Bat Mitzvah, at 9:15 a.m.

Junior Congregation, at 10:00 a.m.

Friday, November 13th, at 6:30 p.m.

Saturday, November 14th, at 7:30 and 9:15 a.m.

Elena Lipson Bat Mitzvah, at 9:15 a.m.

Junior Congregation, at 10:00 a.m.

Nitzanim, at 10:30 a.m. in the APR

Friday, November 20th, at 6:30 p.m.

Saturday, November 21st, at 7:30 a.m. and 9:15 a.m.

Jeffrey Light Bar Mitzvah, at 9:15 a.m.

Junior Congregation, at 10:00 a.m.

Gan Shabbat, at 10:45 a.m. in the APR

Directory News

David Greenberg has moved to 40 Avenue des Chenes, 1180 Brussels, Belgium.

Baruch Dayan Emet

Congregation Beth El offers its sincere condolences to **Elizabeth Belkin**, on the death of her husband, **Morris Belkin** and to the family of **Renee Pressman** on her recent death.

A Riddle

QUESTION: What is the ONLY way you can help Beth El's treasury without it costing you a penny?

ANSWER: Why, through SHOPPING CERTIFICATES, of course! 5% of every grocery-store dollar you spend in certificates—not dollars!—goes to the synagogue.

QUESTION: Where are they available?

ANSWER: In the office and the gift shop; at all major meetings; in the rotunda on Sundays and in the Hebrew School carpool lines; by mail or home delivery. Your choice!

Need information? Can you help by telephoning or selling? Please call Claire Marwick at (301) 657-2328.

MEN'S CLUB NEWS

On Sunday, November 8th, the Men's Club will have as its guest Rabbi Barry Freundel. His topic will be, "Can Orthodox Judaism Tolerate Pluralism?" The program will follow our usual schedule: minyan at 9:00 a.m., breakfast at 9:30 a.m., and Rabbi Freundel's talk at 10:00 a.m. All are invited.

On Sunday, November 15th, we will have as our guest Phil Margolius, the former head of the United Jewish Federation of Washington. His topic will be, "The State of the Washington Jewish Community." Our minyan will be at 9:00 a.m., followed by breakfast at 9:30 a.m. and Mr. Margolius' talk at 10:00 a.m. All are invited.

Men's Club Announcements

We are pleased to announce that **Jay Krupin** will be chairing the "1993 Perspectives in Dialogue" program to be held on Sunday mornings in January. The 1993 program promises to consist of an exciting schedule of nationally known speakers. Mark your calendars for January 9, 16, 23, and 30 and watch for further announcements.

Roy Niedermeyer is chairing a newly formed sports committee. Roy is looking for round 1 draft choices to assist him in putting together a roster of big league programs and events for all to attend during the 92/93 sports season. Call Roy at home at (301) 229-7005 if you are interested.

We goofed . . . **Abe Bass**, one of our long term board members, was omitted from the list of board members published in the September 18th *Scroll*.

Vatikkim Luncheon

On Thursday, November 19th, a speaker provided by the *Washington Post* will talk to us on a subject of current interest yet to be determined.

Lunch is at 12 noon at a cost of \$5.00 for members and \$6.00 for non-members. The program is at 1:00 p.m. Please fill out the following reservation form to pay in advance. Checks should be made payable to Beth El Vatikim and sent to: Bea Goldman at 3214 Henderson Avenue, Silver Spring, MD 20902, phone (301) 942-9434 or Lillian Kessler at 11809 Rosalinda Drive, Potomac, MD 20854, phone (301) 299-6201.

RESERVATION FORM VATIKKIM LUNCHEON

Thursday, November 19, 1992

Please reserve _____ places for me at the Vatikim luncheon.
Enclosed is a check for \$ _____.

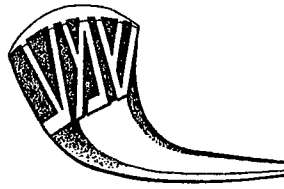
Name: _____

Phone Number: _____

Please have your response reach us by November 17, 1992.

NO RESERVATIONS WILL BE ACCEPTED THEREAFTER

Note: This is the only form that will appear.



Torah Fund Celebrates 50th Anniversary

This year the Jewish Theological Seminary of America is celebrating 50 years of Torah Fund. Michael Katz, of Jerusalem, has designed this beautiful pin, Sh'ma (Heed), in bas-relief on the Shofar. It signifies the

consistent response of the Jewish people to the needs of the Seminary. Leviticus 25 tells us that the Shofar ushered in the Jubilee or 50th year. May we continue to heed the sounds of the Shofar in support of the Jewish Theological Seminary. Your contribution of \$150.00 entitles you to wear, with pride, this most unusual pin. It is a very special way to honor a loved one on a birthday, anniversary or simcha. It is tax deductible. Contact Doris Povich, Torah Fund Chairperson, at (301) 320-5440.

Nitzanim

Beginning this month, Nitzanim services for families with children under six will be held twice a month, on the second and fourth Saturdays of the month. As always, services will be held in the All Purpose Room from 10:30 to 11:30 a.m. Gan Shabbat services, for children in grades K-3, will be held on the third Saturday of the month.

Our thanks to Nancy Rose and Bob Lipman for sponsoring the kiddush following our October Shabbat service, in honor of Elana's fifth birthday.

Please note that our Havdallah service and dinner, originally scheduled for November 7th, has been rescheduled for January 9th. Our next activity will be our Chanukah party, on December 20th at 1:00 p.m. Watch the *Scroll* for further details.

Thanks

The Congregation extends its gratitude to all those who helped prepare, implement and participate in our High Holy Day services. A special note of thanks to Suzanne Bronheim for coordinating the entire effort.

If you will it . . .

Did you know that you can name Beth El in your will as a beneficiary of your estate?

We can give you the wording to have added to your will, so that you may make a contribution in your memory. The Beth El Support Foundation, our vehicle for the long-term financial needs of the congregation, is now looking for members who would be willing to contribute to the Support Foundation in this way. Our dream is to have an endowment program to help support the various needs of our congregation. You can help us reach our goal.

. . . our dream can come true.

Bloodmobile

The next Blood Drive will be held on December 6th from 9:00 a.m. - 2:00 p.m. Come and give the gift of life and have breakfast with others that are doing the same.

The Evening Minyan

The following people are asked to help us with our daily evening minyan for the next two weeks. The minyan begins at 8:00 p.m. and concludes at 8:15 p.m. On the evenings when the Saul Bendit Institute meets, the minyan will be at 7:45 p.m. During the week of your assignment, we would appreciate your attending as many evenings as possible, so that those who are saying Kaddish will have a minyan that they can attend at Beth El.

November 9 - November 12

Elliot and Betty Blum
 Eli and Gayle Blumenthal
 Werner and Bernice Blumenthal
 Harvey and Abby Boff
 Philip and Hope Borish
 Benjamin Bornstein and Ellen Sidronsky
 Horst and Ruth Brand
 Douglas and Brenda Bregman
 Elliot Breslau
 Joel and Bernice Breslau
 Jerome and Hessa Broder
 Jerome and Myra Brodie
 Gerald and Caryl Brody
 Kenneth and Carol Brody
 Mark Bronfman and Trina Bellak-Bronfman

November 16 - November 19

Benjamin and Suzanne Bronheim
 David and Harriet Brooks
 David Brown
 Arthur and Susan Bruckheim
 Aaron and Kandi Budgor
 Barry Bukatman
 Ray Butler and Donna Butler-Tucker
 Abner and Ruth Byer
 Jeffrey and Sharon Caplan
 Sidney and Miriam Carter
 Richard and Shelley Chasen
 Richard and Petrina Chavis
 Gerald and Fay Chernan
 Joseph and Kathleen Chomski
 Frank and Estelle Churgin

The Havurah Minyan

Every is *welcome* to daven and discuss Torah at the *Havurah Minyan*. We meet in the "all-purpose room" on the first Shabbat morning of each month (except during July and August) at 9:30 in the morning.

BETH EL SCROLL

Congregation Beth El of Montgomery County

8215 Old Georgetown Road, Bethesda, Maryland 20814

Rabbi Jonathan Z. Maltzman
 Rabbi Emeritus Samuel Scolnic
 Hazzan Abraham Lubin
 Executive Director Steven J. Kravitz
 Education Director Louis Nagel
 Nursery School Director Ellen Darr
 Youth Director Rachel Berlin
 President Erwin Groner
 First Vice President Leonard Bechick
 Second Vice President Suzanne M. Bronheim
 Second Vice President Jonathan Schraub
 Treasurer Susan Brinn Siegel
 Financial Secretary Cary Feldman
 Secretary Sharon Tievsky

Synagogue Office 301-652-2606
 FAX Number 301-907-8559
 School Office 301-652-2608
 Nursery School 301-652-1228

AFFILIATED WITH UNITED SYNAGOGUE OF
 CONSERVATIVE JUDAISM

Tuning in with Cantor Lubin

Ever since I arrived in the United States, more than thirty years ago, I have been deeply involved in the sacred work of the Cantors Assembly. I felt then, as I certainly know very well now, that this organization of professional hazzanim played and continues to play a most vital and important role in the infrastructure of the Jewish community in America and indeed throughout the world.

As some of you may know, I presently serve, with pride, as treasurer of this international body. During the more than three decades of my association with this organization I have witnessed a remarkable growth in its accomplishments and an ever widening focus of its activities.

Having now served as your Hazzan for two years I feel quite comfortable in sharing with you the reasons for my enthusiasm for the Cantors Assembly.

I do this with the knowledge that our membership is unique for its openmindedness and willingness to learn and absorb a variety of new experiences in the vital religious, educational and cultural life of our beloved congregation.

The Cantors Assembly is the organization of hazzanim who serve the congregations of the Conservative Movement. It is an affiliate of the Jewish Theological Seminary of America, a founder and supporter of the Cantors Institute, the Seminary's school for training future hazzanim.

The largest body of hazzanim in the world, its members serve congregations in the United States, Canada, Sweden, Australia, Argentina and Israel.

Since its establishment in 1947, it has remained loyal to its founding principle: to work for the continuity of the traditions of Jewish worship, to enhance the influence of Conservative Judaism and to maintain the highest standards for our sacred calling and for those who practice it.

Above all, the Cantors Assembly has an unyielding commitment to preserve and enhance our heritage of Jewish music. Since the Holocaust, this task now falls almost entirely on hazzanim who are the trustees of this tradition on behalf of all Israel.

In pursuit of these goals, the Cantors Assembly, in 1952, spearheaded the establishment of the Cantors Institute, continuing to this day to help support it and to help those students who may need financial aid.

The Cantors Assembly is vitally concerned with the shortage of young people entering the cantorate. Without a new generation to follow us, the Jewish community will be in danger of losing a precious and religious heritage. There is a real possibility that the synagogue service, as we know it and love it, could deteriorate in the hands of unskilled and untrained prayer leaders.

During the year ahead I hope to publicize the various projects and programs of the Cantors Assembly and invite you to join with me in supporting this worthy and creative organization on the American Jewish scene. Please call to find out more about the Cantors Assembly and its ongoing work on behalf of the Jewish Community here and abroad.

IF YOU KNOW OF A FELLOW CONGREGANT WHO IS ILL AND/OR HOSPITALIZED OR HAS HAD A RECENT LOSS, PLEASE NOTIFY ROZ, IN THE SYNAGOGUE OFFICE, AS SOON AS POSSIBLE AT (301) 652-2606.

Congregation Beth El Gratefully Acknowledges the Following Donations

(Donations received as of October 2, 1992)

Bendit Adult Institute Fund

In Memory Of: Mother, Ella Cluck, by Josephine C. Stein; Maurice Passes by Dr. and Mrs. Harold Passes.

Beth El Forest

In Honor Of: The anniversary of David and Claire Helfman by Werner and Bernice Blumenthal. In Memory Of: Arlene Fakin Hay by Steven A. Frank; beloved father, Bernard Dubow, by Irvin and Ethel Hamburger; Eva Sokol by Jose Sokol; Murray Daskal, husband of Roz Daskal, by Mrs. Judith Newman; Herman Canter by Mrs. Judith Newman; Murray Daskal, husband of Roz Daskal by Lillian Kessler.

Building Fund

In Memory Of: Beloved husband, Henry Hopp, by S. Elmira Hopp.

Cantor's Fund

In Honor Of: Son, Ethan's Bar Mitzvah, by Walter and Marsha Arnheim; Marilyn Hammerman and Seymour Gross, Revitz House for their Yiddish Muscial performance by Marilyn Hammerman and Seymour Gross; engagements of Hazzan and Mrs. Abraham Lubin's children by Margaret Bogler.

Chevra Kadisha Fund

In Memory Of: Helen Millenson by Roy and Charlotte K. Millenson; Rose Fassberg and Isadore Fassberg by Harold and Vera Fassberg.

Disabled Access Fund

In Memory Of: Rose Geiger by Mr. Melvin Geiger; beloved daughter and sister, Sara Richter, by Mr. and Mrs. Melvin Richter.

Fine Arts Fund

In Memory Of: Meyer Cohen by Jack and Naomi Cohen.

General Fund

In Honor Of: A Happy and Healthy New Year to all members of Beth El by Martin S. Dembo; son, Ethan's Bar Mitzvah by Walter and Marsha Arnheim; 40th Anniversary of Sarah and Ben Kaiser by Estelle Stone. In Memory Of: Murray Daskal, husband of Roz Daskal, by Martin S. Dembo; Leon Weintraub by Mr. and Mrs. L. Mark Wine.

Groner Ramah Scholarship Fund

In Memory Of: Sylvia Cohen Berman by Lois and Larry Jassie, Kira and Nicole.

Havurah Fund

In Memory Of: Eulene Wachs by Dr. Melvin Wachs.

Hopp Library Endowment Fund

In Memory Of: Beloved husband, Henry Hopp, by S. Elmira Hopp.

Kimball Nursery School Fund

In Honor Of: Sherman Kimball by Jon D. Kimball; the birth of Lindsay Steckler by Harvey and Wendy Reiter. In Memory Of: Estelle Kimball by Jon D. Kimball; Grandpa, Herbie Brenner, by Hillary and Aaron Ganek.

Library Fund

In Memory Of: Rebecca Weiss by Mrs. Gertrude Weiss; Eleanor Mitnick Berzofsky by Jay A. and Sharon Berzofsky.

Mazon

In Honor Of: Aliyah's and Murray and Trudy Haber by Bernie and Anita Ash; marriage of daughter, Lauren to Howard Foer, by Howard and Jan Levine; engagement of Guy Wassertzug and Valerie Herman by Mr. and Mrs. Louis Rib. In Memory Of: Lew Ash by Jerry and Fay Chernin; Charles Lefkowitz by Jerry and Fay Chernin; Louis Ash, brother of Bernard Ash, by Marilyn D. and Daniel Kwellner; Lillie Lefkowitz by Jerry and Fay Chernin; Sally Malin by Jerome Malin; Bertha Temkin by Miriam Kuskin.

Morning Minyan Fund

In Honor Of: 4th grandchild of Sandy and Dick Pollen by Philip and Hope Borish. In Memory Of: Betty Lesser by Allen and Frances Lesser; Rita G. Minker by Jack Minker; Murray Daskal, husband of Roz Daskal, by Mr. and Mrs. Seymour Gross; Nathan Dubinsky by Robert G. Dubinsky; Meyer Goldberg by Dr. and Mrs. Emanuel Landau.

Music Fund

In Memory Of: Rose Richter by Melvin and Lenore Richter; Archie Berde and Cyril Heiman by Irene Heiman Hauser.

Pinck Israel High School Scholarship Fund

In Honor Of: Birth of grandson by Evelyn and Ronnie Treinish. In Memory Of: Brother of Bernard Ash by Evelyn and Ronnie Treinish.

Prayerbook Fund

In Memory Of: David Nisan Greenwood by Naomi Kolko; Gillian Papiisky Cohen by Dr. and Mrs. M. Papiisky; Max Abraham Jacobson by Irvin and Ethel Hamburger.

Rabbi's Fund

In Honor Of: Son, Ethan's Bar Mitzvah by Walter and Marsha Arnheim; Aliyah that Fay received by Jerry and Fay Chernin; his Torah honors by Irving Zimmerman; 90th birthday of Martha Dellheim by Karl Freiberg; his Aliyah by Dr. and Mrs. Arthur Becker. In Memory Of: Adolph Cutler and Jennie Sello by Ilse and Fred Cutler; Murray Daskal, husband of Roz Daskal, by Jerry and Fay Chernin; Murray Daskal, husband of Roz Daskal, by Bernie and Anita Ash; Norman Levin by Theodore Levin; Bernard Feingold, father of Lenore Richter, by Mr. and Mrs. Melvin Richter; father, Joseph Brown, by David H. Brown; Murray Daskal, husband of Roz Daskal, by Dr. Herbert L. Wisner; Murray Daskal by John and Marion Wolff.

Social Action Fund

In Honor Of: Harriet Brooks' birthday by Gloria and Beryl Frank; a complete recovery of Barbara Wolf by Gloria and Beryl Frank. In Memory Of: Mother of Debbie Mendelsohn by Harvey and Wendy Reiter; Jonathan Sigelman by Wendy and Harvey Reiter; Charles Lefkowitz by Bernie and Anita Ash; Lillie Lefkowitz by Bernie and Anita Ash; Ivor Pitch by Anthony Pitch; Taube Fleischer by Bert Just.

Torah Scroll Fund

In Memory Of: Father, Harry Serlick, by Edna S. Krents

Closing Community Lecture and Reception

The Foundation for Jewish Studies cordially invites you to the **Closing Community Lecture and Reception, Tuesday, December 1st at 8:00 p.m.** The topic will be **"Is the Guide for the Perplexed Relevant to the Jewish Condition Today?,"** with Fall '92 Scholar-in-Residence, **Professor Menachem Kellner**, Wolfson Chair of Jewish Thought and Heritage at the University of Haifa. The program will be held at Washington Hebrew Congregation, 3935 Macomb Street, NW, Washington, D.C.

DO YOU HAVE . . .

Tickets to:
 sporting events?
 theatres?
 A boat?
 A vacation home?
 Golf club membership?
 A talent that others would enjoy?
 Transferrable frequent flyer miles?
 Unused gift items or home furnishings?
 Service providers who would donate a product or service?
 Family members who would donate a product or service?

ARE YOU ABLE TO . . .

Write a will?
 Tutor?
 Cook or bake?
 Babysit?
 Host or hostess?
 Give lessons of any type?
 Provide professional services?
 Prepare taxes?
 Counsel people on a topic?
 Make a financial contribution?
 Solicit family members and/or neighbors who can provide neighbors with any of the above?

We are looking for the above items . . . and more . . . for the Action Auction to be held on November 21, 1992. If you are able to make a contribution of items, such as those above, please call Michelle Herman (301) 469-7654 or Sheila Birnbach (301) 881-2342.

SISTERHOOD NEWS

We Tip Our Hats . . .

Sisterhood wishes to thank the many people responsible for the overwhelming success of the Hat Show and Brunch, the first Sisterhood event of the season. Thanks go to **Gabriela Bebchick** for her leadership, and to **Michele Herman, Sonja Schultz, and Joan Fishbein** for their help. Of course, the show could not have been a success without the attractive Beth El models and the handiwork of Hats by Haber. And thanks to all who came and shared in the fun!

Women's League National Convention

The Women's League National Convention will be held this year November 15-19 at the Concord. If you are interested in attending, please contact Sisterhood President Ellen Elow-Mintz at (301) 229-4924.

Correction

The amount of Sisterhood scholarships for last year was \$2,773. Maybe next year we can make it more!

.....

Congregation Beth El Hosts New Jersey USYers, December 23-27

The United Synagogue Youth International Convention will take place in Baltimore from December 27 - 31. Beth El has been asked to host Hagalil Region (Northern New Jersey) USYers for a pre-convention. The teens will arrive at Beth El on Wednesday night Dec. 23 and depart on Dec. 27 for Baltimore.

Beth El will need families to volunteer to host the young people. The responsibilities of hosting include breakfast, perhaps bag lunches and driving to and from Beth El. The teens will come with sleeping bags. If you would like to volunteer, please call Rachel at 652-2606.

This is great opportunity to participate in the mitzvah of hachnasat orchim - hospitality. Please call Rachel as soon as possible since arrangements must be finalized shortly.

100th Sukkah Kit Sold

The Nitzanim Sukkah Kit project reached a milestone this past September when the 100th kit was sold. The 20 Sukkahs distributed this year make a grand total of 114 kits produced during the five years the project has been in existence. The Congregation would like to thank our Sukkah building crew: Pat, Jerry and David Danoff, Howard Berger, Norman Graber and Jack Yanovski, for a job well done.

On Saturday, November 7th, the D'var Torah will be delivered by Rabbi Marshall J. Maltzman, father of Rabbi Jonathan Z. Maltzman and Rabbi Emeritus of Temple Beth Hillel Beth El in Wynnewood, Pennsylvania.

Entertainment 1993 Books

Buy your Entertainment 1993 Books now! Books are available in the *nursery school office*. For information or book reservations, call (301) 652-1228. Books are \$35.00 each. For each book sold, \$7.00 goes to support the Beth El Nursery School.

**Large Print Prayer Books, and
Hearing Enhancement Receivers
are available for your use
in our sanctuary.**

Please see the ushers when you arrive.

Dedication - A Personal Mitzvah

We are privileged that Mr. Jacques Battat, 83, has undertaken as his personal mitzvah, the repair of all our tailot. Mr. Battat comes to Bethesda from Montreal to visit his son.

Not only did he spend many hours - but he also pays for the new tzitzit himself - making this his personal mitzvah. In addition, he also visits other synagogues to perform the same mitzvah.

Beginner's Cantillation Class for Adults with Hazzan Lubin

If you have not celebrated a Bar or Bat Mitzvah in your youth, or if you had not learned the Haftarah and Torah Cantillations, you now have the opportunity to do so.

An adult beginners' class in Cantillations will be offered in the fall. The only important prerequisite to attend the class is the ability to read Hebrew.

If you are interested in this class please call Selma at the synagogue office at (301) 652-2606.

Beth El Self Help

Members of Beth El have become increasingly concerned about the effects of the current recession on our own small community. There is a general desire to become the sort of community that can help itself in the best Jewish tradition. We feel that we have the resources to assist those members who may, because of lack of a job or due to an unexpected crisis, need help in coping with specific problems requiring medical or dental services, legal advice, financial aid, or locating new employment. We would like to try to help. Please give us the opportunity; contact: Brenda Gerwin at (301) 652-3297 or Erwin Groner at (301) 299-3114.

Fall/Winter Bible Heritage Series

The Fall/Winter Bible Heritage Series sponsored by The Foundation for Jewish Studies in cooperation with Congregation Beth El will be held in the Sanctuary.

Thursday, November 19th, Tuesday, December 15th and Tuesday, January 12th and will feature talented Bible scholars on the theme, Biblical Texts and Commentary.

At your next life-cycle event, consider a 3% donation to Mazon, a Jewish response to hunger.

Workshop Series for Parents "Integrating Judaism into Daily Life"

On November 1st, the Beth El Parent/Family Education Committee, a joint project of Sisterhood and the Religious School, will hold a **Parent Education Workshop**. The six workshops feature outstanding speakers/discussion leaders who will explore ways to integrate Judaism into family living. The one-and-a-half hour presentation will be offered in the Board Room during each session of Sunday School. The programs are open to all interested parents, grandparents, congregants and their guests. Light refreshments will be provided. At this time, no reservations are necessary. The other workshops are scheduled for December 6th, January 10th, February 7th and March 14th. Subsequent topics are:

Honor thy Parents/Honor thy Children: Who's in Control?
Finding your Way through the Siddur
Chosenness: Teaching the Uniqueness of Judaism
How to Talk to Children about Death
Tikun Olam/Tzeddakah

Mark your calendars now for these lively mornings of discussion, debate, interaction, insight and camaraderie! Programs are scheduled for: Early Session — 9:30 a.m. - 11:00 a.m.; Late Session — 11:30 a.m. - 1:00 p.m.

The Parent/Family Education Committee, consisting of Sisterhood members and parents whose children attend the Religious School, has worked closely with Louis Nagel, Education Director, to plan this program series. 1992-93 topics were selected because of their importance to parents who attended last year's series and provided feedback concerning their needs. Parents and others who want to participate on this committee are invited to contact Gail Ross, committee chairperson, or Louis Nagel in the Religious School Office at (301) 652-2608.

Editor's Note: Louis was just honored by the coalition for the advancement of Jewish Education (CAJE) with the inclusion of his paper entitled "Hanukah: Religious School Essay Contest Program" in the fall issue of the CAJE magazine *Bikurim*.

From the Youth Director.....

Youth programming is in full swing this fall. Activities have been held for children of all ages.

USYer's have participated in a Political Action Seminar, gone bowling, and plan to attend an awesome hayride on Saturday November 7th. In addition they participated in the Shabbat Shuvah Service. (Yasher Koach to all involved.)

Kadima kids had a pizza party as their September activity, and went on a scavenger hunt in October. On November 7th they are looking forward to joining Har Shalom and Ohr Kodesh Kadima and USY on an incredible hayride. A good time will be had by all.

Machar and Bonim had a supercalifragialistic time decorating the Sukkah on October 11th and singing with Beth El's music teacher, Anita Schubert. We would all like to thank Mrs. Schubert for her help and enthusiasm.

Upcoming Activities

Watch your mail for upcoming activities. If you have any questions or comments please call Rachel Berlin (Youth Director) at (301) 652-2606.

USY (9-12 grades)

Nov. 7 - Hayride

Nov. 8 - Shepherds Table

Nov. 13-15 - Regional Convention

KADIMA (6-8 grades)

Nov. 7 Hayride

MACHAR (3-5 grades)

Nov. TBA

BONIM (K-2 grades)

YOUTH DUES

USY - \$24 • Kadima - \$20 • Machar - \$18 • Bonim - \$18

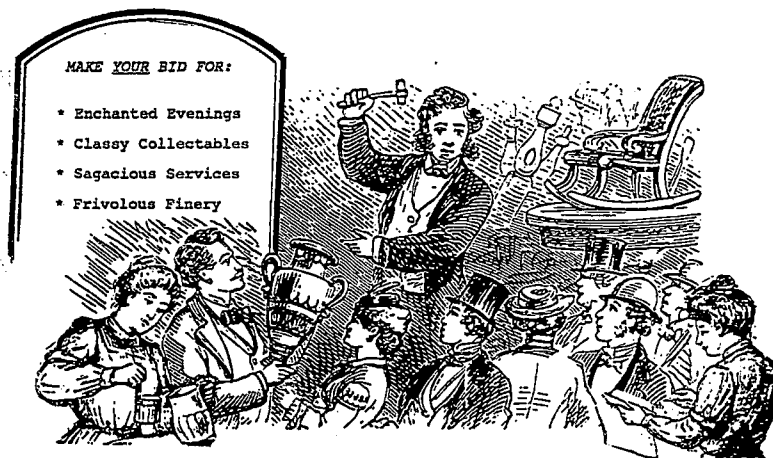
Please send checks made out to Beth El Youth to:

Rachel Berlin, Congregation Beth El, 8215 Old Georgetown Rd., Bethesda, MD 20814

*If you think you have paid youth dues but are not sure please call Rachel Berlin, Youth Director at (301) 652-2606.

Beth El *Action* Auction

Saturday, November 21 • 1992 • 7:30 PM



Champagne Dessert / Silent Auction / Exciting Live Auction / Admission \$6.00

From the Principal's Desk

As stated in the Torah, the mitzvah to give our children a Jewish education is perfectly unambiguous. The commandment, which came to be a part of every daily prayer service, sets the requirement to "diligently teach them (words of Torah) to your children." In this verse there is no comment on capable versus less capable students. An early debate speaking to that theme comes in a Talmudic polemic between the School of Hillel and the School of Shammai. The School of Hillel says: "One ought to teach every(one), for there were many sinners in Israel who were drawn to the study of Torah and from them descended good, pious, and worthy folk." Further supporting this position is the commandment "not to place a stumbling block before the blind"; a statement which speaks to the conditions under which we present subject matter.

What I seek to establish is the principle and an understanding that ours is a school for all children. Our challenge is to mainstream the capable, gifted student with the less capable, less talented student and all ability levels in between. A part of this mix are also varying degrees of motivation, enthusiasm and family support. This understanding carries with it the responsibility to present material in a way that is accessible to all students, that will be sufficiently engaging to all students and, in the final analysis, successfully learned by all students. Sounds like a pretty tall order to me. But we are an optimistic people and determined ("thou art a stiff-necked people") when a challenge lies before us.

When I meet with the religious school faculty, as a group and as individuals, I am constantly amazed by the remarkable level of commitment to this daunting challenge of Jewish education. Our teachers come with widely varying backgrounds and talents. There are education professionals, Judaic scholars, and committed Conservative Jews who want to be a part of a teaching tradition that reaches back over thousands of years. Sometimes they know what is best from experience. Others come with a textbook definition of what is correct and proper. Whatever our knowledge base few among us can claim to have all the answers both in the realm of Jewish knowledge and in what is pedagogically sound. Our teachers strive to teach all students. They consistently have their consciousness raised on the needs of the gifted, the learning disabled, the child of the divided family, the interfaith family, the make-my-child-Jewish-for-us family and the both feet firmly placed on the ground-dedicated to advancing participation in Jewish life-third generation member of Beth El family. And in response, even for the most seasoned professional the teaching process is a learning process. This dynamism is what makes pennant races, it is also what makes Jewish life. We are dedicated to doing the best for our children getting through to the cognitive and affective domains, using whatever means is within our ability to marshal. I invite you to be a partner in this process.

PARENT ACTION COMMITTEE - I would like to thank Jody Benjamin and Amanda Ford, committee co-chairs, and Deborah Cohn, of the Education Committee for their exceptional efforts to get the Religious School Parent Action Committee up and running. The first two projects undertaken were to arrange for room parents for each class and to find people interested in helping bring to fruition the first Religious School Directory. The first effort has been accomplished and the second is well under-

way. A job for the room parents will be to organize grade level socials. Keep an eye out for an invitation to a gathering of the parents of your child's class.

CONSECRATION - Celebrating the occasion of a child beginning formal religious instruction is a tradition dating back at least several centuries to medieval Europe. At Beth El we will be celebrating that moment for many of our students at the Shabbat Evening Service on Friday, November 13th. Participation in that evening's festivities is open to all children who will be beginning their religious school education this year. Participation in a synagogue nursery school program does *not* disqualify a child from participation in this celebration.

The evening will be punctuated by two ceremonies. Consecration is a celebration of our kindergartners beginning their formal religious school education. That ceremony will be followed by one recognizing the students from other grades who will also be starting their religious school education.

If you are interested in having your child participate in this ceremony please fill out the form that was included in the August Religious School mailing or contact the School on or before Sunday, November 1st.

TIKKUN OLAM - MALBISH ARUMIM (Clothing the Naked) In the month of November the Religious School will sponsor a winter clothing drive. In the classroom students will learn about the mitzvah of Malbish Arumim and act on these lessons.

Clothes should be warm, clean and in good condition. Shoes, boots and coats for children and youth are especially needed. An exception: No White Shirts. A collection box will be placed in the hallway outside of the school office. Volunteers are needed to sort and deliver. If interested, please contact the school office.

HONOR THY PARENTS/HONOR THY CHILDREN - WHO'S IN CONTROL? - The Parent/Family Education Committee will present the second workshop in this year's series, "Integrating Judaism Into Daily Life." This workshop will deal with how families can facilitate open communications while establishing limits and authority within the context of Jewish ethic and values. The workshop facilitator, Mara Bier, has led highly regarded parenting workshops sponsored by Montgomery College and the Board of Jewish Education. The early session workshop will begin at 9:30 a.m. in the Board Room. The late session workshop will begin at 11:30 a.m. and will take place in the All-Purpose Room.

A REQUEST TO SUNDAY MORNING LATE SESSION PARENTS - Please do not leave your children in the classroom before 11:10 a.m. Early session classes end at 11:00 a.m. and teachers need a few minutes to prepare for the next group. On behalf of the faculty I thank you in advance for your cooperation.

Louis Nagel

WE NEED HOST FAMILIES

USY International Convention will take place in Baltimore, December 27-31. Beth El has been asked to host New Jersey USYers for a pre-convention on December 23-27. If you would like to volunteer to provide housing, please call Rachel Berlin, Youth Director, at (301) 652-2606 as soon as possible.

November 1 - 28, 1992

SUNDAY	MONDAY	TUESDAY	WEDNESDAY	THURSDAY	FRIDAY	SATURDAY
<p style="text-align: center;">Nov 1</p> <p>9:00am Minyan - Chapel 9:00am Parent Ed. Workshop-BR 9:30am Men's Club Brkfst/Program-APR 12:30pm Lubin/Levitt Wedding</p>	<p style="text-align: center;">Nov 2</p> <p>9:30am Hebrew Literacy - Rm 208 7:00pm Cub Scouts - APR 9:00pm Nursery School - SH</p>	<p style="text-align: center;">Nov 3</p> <p>8:00am Nursery School Open 10:00am Saul Bendit Inst. 7:30pm Torah Talk - APR 8:00pm Exec. Bd. Mtg. - BR No Religious School-Election Day</p>	<p style="text-align: center;">Nov 4</p> <p>7:00pm Boy Scouts - APR 8:00pm Saul Bendit Inst.</p>	<p style="text-align: center;">Nov 5</p> <p>12:00pm Vatikim Study Session-SH 8:00pm Ritual Comm. - BR 8:15pm Ritual Comm. - BR</p>	<p style="text-align: center;">Nov 6</p> <p>4:43pm Candles 6:30pm Friday Evening Service Scroll #7 Deadline</p>	<p style="text-align: center;">Nov 7</p> <p>7:30am & 9:15 am Shabbat Services 9:00am Havurah Minyan-APR 9:15am Corine Schneider B/M 10:00am Jr. Congregation 7:30pm Schneider Party - GL, SH</p>
<p style="text-align: center;">Nov 8</p> <p>9:00am Minyan - Chapel 9:30am Men's Club Brkfst/Program-APR 9:30am Sisterhood Bd. Mtg.-BR</p>	<p style="text-align: center;">Nov 9</p> <p>9:30am Hebrew Literacy - Rm 208 7:00pm Cub Scouts - APR</p>	<p style="text-align: center;">Nov 10</p> <p>10:00am Saul Bendit Inst. 7:45pm Nursery Bd. - APR 8:00pm Cong. Mtg. - SH</p>	<p style="text-align: center;">Nov 11</p> <p>7:00pm Boy Scouts - APR 8:00pm Saul Bendit Inst. Veterans Day</p>	<p style="text-align: center;">Nov 12</p> <p>12:00pm Vatikim Study Session-SH 7:00pm AMI-APR</p>	<p style="text-align: center;">Nov 13</p> <p>4:36pm Candles 6:30pm Friday Evening Service 7:15pm Grades K-2 Dinner</p>	<p style="text-align: center;">Nov 14</p> <p>7:30am & 9:15 am Shabbat Services 9:15am Elena Lipson B/M 10:00am Jr. Congregation 10:30am Nitzanin-APR 8:00pm Lipson Party - SH Sedra of the Week-BR</p>
<p style="text-align: center;">Nov 15</p> <p>9:00am Minyan - Chapel 9:30am Men's Club Brkfst/Program-APR 5:00pm Pearlstein Wedding</p>	<p style="text-align: center;">Nov 16</p> <p>9:30am Hebrew Literacy - Rm 208 7:00pm Cub Scouts - APR</p>	<p style="text-align: center;">Nov 17</p> <p>10:00am Saul Bendit Inst. 6:30pm Sisterhood Paid-up Membership-SH 7:30pm Torah Talk - APR</p>	<p style="text-align: center;">Nov 18</p> <p>7:00pm Boy Scouts - APR 8:00pm Saul Bendit Inst.</p>	<p style="text-align: center;">Nov 19</p> <p>12:00pm Vatikim Luncheon-SH 7:30pm Jewish Foundation Lecture - Sanct. 7:30pm Youth Comm.-Library 8:00pm School Comm. - BR No Nursery School</p>	<p style="text-align: center;">Nov 20</p> <p>4:31pm Candles 6:30pm Friday Evening Service Scroll #8 Deadline</p>	<p style="text-align: center;">Nov 21</p> <p>7:30am & 9:15 am Shabbat Services 9:15am Jeffrey Light B/M 10:00am Jr. Congregation 10:45am Gan Shabbat 9:00pm Auction Program</p>
<p style="text-align: center;">Nov 22</p> <p>9:00am Minyan - Chapel 9:30am Men's Club Brkfst/Program-APR</p>	<p style="text-align: center;">Nov 23</p> <p>9:30am Hebrew Literacy - Rm 208 7:00pm Cub Scouts - APR</p>	<p style="text-align: center;">Nov 24</p> <p>7:30pm Torah Talk - APR 7:45pm Evening Minyan 8:00pm Interfaith Service</p>	<p style="text-align: center;">Nov 25</p> <p>2:00pm Office Closed Early No Religious School</p>	<p style="text-align: center;">Nov 26</p> <p>9:00am Minyan Thanksgiving</p> <p style="text-align: center;">No School</p> <p style="text-align: center;">Office Closed</p>	<p style="text-align: center;">Nov 27</p> <p>7:30am Morning Minyan 4:28pm Candles 6:30pm Friday Evening Service</p>	<p style="text-align: center;">Nov*28</p> <p>7:30am & 9:15 am Shabbat Services 9:15am Elisa Ross B/M 10:00am Jr. Congregation 10:30am Nitzanin - APR 12:45pm Shabbat Study Group - BR</p>

**EVENING MINYAN: 8:00 p.m. Monday, Tuesday and Thursday
7:45 p.m. Wednesday of Saul Bendit Institute**

MORNING MINYAN: 7:30 a.m. Monday through Friday

CONGREGATION BETH EL
of Montgomery County
8215 Old Georgetown Road
Bethesda, Maryland 20814

Non-Profit Org.
U.S. Postage
PAID
Bethesda, MD
Permit No. 7007