



CONGREGATION BETH EL OF MONTGOMERY COUNTY

11 Tammuz 5756

VOLUME 45 ISSUE 21

June 28, 1996

Shabbat Schedule

Friday, June 28th, at 6:30 p.m.

Saturday, June 29th, at 7:30

Saturday, June 29th, at 9:15 a.m.

Emily Eckland Bat Mitzvah

Rebecca Mandel Bat Mitzvah

Friday, July 5th, at 6:30 p.m.

Saturday, July 6th, at 7:30 and 9:15 a.m.

Elizabeth Sheffield Bat Mitzvah at 9:15 a.m.

Worship and Study Minyan at 10:00 a.m. in the APR

Friday, July 12th, at 6:30 p.m.

Saturday, July 13th, at 7:30 and 9:15 a.m.

New Torah Readers' Shabbat at 9:15 a.m.

Nitzanim at 10:30 a.m. in the APR

Friday, July 19th, at 6:30 p.m.

Saturday, July 20th, at 7:30 and 9:15 a.m.

Gan Shabbat at 10:00 a.m. in the BR

Learners' Minyan at 10:00 a.m. in the APR

Friday, July 26th, at 6:30 p.m.

Saturday, July 27th, at 7:30 and 9:15 a.m.

Rachel Eisenstadt Bat Mitzvah at 9:15 a.m.

Nitzanim at 10:30 a.m. in the APR

Off The Bimah

Stop by the shul next month and say hello to our Associate Rabbi, William Rudolph. Rabbi Rudolph will begin a new chapter in his 13 year tenure at Beth El, having received the enthusiastic endorsement of the Board of Directors and the Congregation at our quarterly meeting in February. I am delighted that Bill has agreed to assume full time duties and I look forward to a long and fulfilling tenure.

Rabbi Rudolph joins us in this capacity at a time when the congregational life cycle demands alone have become overwhelming. As part of his duties, he will preside over at least one Bar/Bat Mitzvah Service per month and, on alternate weeks, will continue his involvement in the Early Morning Minyan. Our Worship and Study Service will also benefit from his input, as will our College Students Program, Havurot and sundry other committees and synagogue organizations.

Those of you who were involved in Beth El when I arrived nearly eight years ago can attest to the fact that circumstances could easily have led to a tense and unsettling relationship between Rabbi Rudolph and myself. But it was not to be. In fact, I am delighted that Bill and I have become not only close colleagues but supportive friends as well. Let me be the first in line on July 1st to extend to Bill a hand and a hug as he assumes his new duties.

Rabbi Jonathan Z. Maltzman

High Holiday Packets

Check your mailboxes for our High Holiday Packet by mid-July.

Please return your registration form as soon as possible so that the office staff can have time to process them.

All Registration Forms must be in by August 15, 1996. The tickets will be mailed two weeks prior to Rosh Hashanah.

New Torah Readers to Be Initiated on Shabbat, July 13, 1996

Members of Hazzan Lubin's Torah Cantillation Class will be initiated as new Torah readers at the Shabbat morning service on July 13, 1996, at 9:15 a.m. in the Sanctuary.

The following students will read a Torah portion:

Rick Claxton, Jerome Gabry, Daniella Livnat,

Tara Sonenshine, Judith Spector,

Marta Wassertzug and Martha Wexler.

The Haftarah will be chanted by Marta Wassertzug.

You are invited to attend this service and congratulate our new Torah readers on their achievements.

Keruv

Keruv wants your questions and comments! Feel free to ask about almost anything, and we will try to answer you in the Beth El Scroll or privately. Address: "Dear Keruv," in care of the synagogue office.

Keruv ("outreach") was formed to address the issues of intermarriage at Beth El. We hold drop-in Shabbat discussions, talk to Havurot and have family-based holiday parties. For more information about Keruv and its activities, call Susan Levine at (301) 530-2919.

Vatikkim Luncheon

Our guest speakers for the program at the July Vatikkim luncheon are both active in the field of mental health. Kenneth Gorelick, M.D., faculty member, Department of Psychiatry Training and co-director of the Biblio/Poetry Therapy Training Program at St. Elizabeth's Hospital in Washington, D. C., will present a slide-illustrated talk on the history of St. Elizabeth's. He will also describe the unique Poetry Therapy Program. Rabbi Joseph R. Levine, who serves as Jewish chaplain at the Clinical Center, National Institutes of Health in Bethesda, and at St. Elizabeth's Hospital, will report on his work with Jewish patients at those institutions.

Lunch is at noon and the program is at 1:00 p.m. Cost for members is \$5.00 and for non-members, \$6.00. Please fill out the reservation form below and make your checks payable to Beth El Vatikkim. Please mail the form and check to: Bea Goldman, 3214 Henderson Avenue, Silver Spring, MD 20902, (301) 942-9434, or Lillian Kessler, 5450 Whitley Park Terrace, Bethesda, MD 20814 (301) 530-5650.

Please note that we will not accept reservations later than two days before the scheduled event to assure proper planning.



Men's Club News

On June 30th, the Men's Club "It's Academic" team will be competing in the Finals of the Regional Men's Club competition. These will take place at Adas Israel Congregation at 10:00 a.m. At Congregation Beth El, the Men's Club weekly speaker will be Harris Adams, who will be speaking on the topic of "Providing Nursing Care at Home" at 10:00 a.m. At both locations the Morning Minyan starts at 9:00, followed by the breakfast at 9:30. All congregants are encouraged to cheer our team on to what we are sure will be a winning outcome, or join us at Beth El for an informative and interesting presentation.

This past year has been marked by a tremendous number of programs and activities. On every Sunday of the year, following the Morning Minyan, those in attendance have sat down and enjoyed a bagels and lox breakfast, thanks to the hard work of Ed Golfer and his committee. On almost every Sunday this has been followed by a speaker or other type of presentation, thanks to the very diligent and resourceful efforts of Howard Copperman and his committee. Major events over the past year have included the "Perspectives in Dialogue" series featuring nationally and internationally known speakers, the Purim Carnival, the Kavod Awards breakfast and the Magic Show and Spaghetti Dinner. In addition, the Men's Club has sponsored the Softball Team and "It's Academic" Team. Other activities in which the Men's Club has continued in its annual support of the synagogue and community include supporting the Scouts and other youth programs, providing funds for scholarships, kiddush cups at B'nai Mitzvah and various types of financial assistance and aid. Thanks go out to our President over the past two years, David Levine, and our outgoing Treasurer who has been in office for the past four years, Herb Wisner.

On May 12th, the Men's Club elections for the 1996 - 97 year were held. The new officers are as follows:

- President..... Marvin Yudkovitz
- Executive Vice President Cary Feldman
- Vice President, Programs..... David Goldman
- Vice President, Publicity..... Bernie Rod
- Vice President, Sports..... Roy Niedermayer
- Vice President, Key Events Seth Levita
- Vice President, Hospitality Ed Golfer
- Vice President, Membership David Schultz
- Secretary..... Howard Lesser
- Treasurer..... David Levine

Ex-Officio Officers are Rabbi Maltzman, Rabbi Rudolph, Rabbi Scolnic and Hazzan Lubin. The Board of Directors consists of Abe Bass, Howard Copperman, Jack Edlow, Sam Frishman, Sanford Kay, Lillian Kessler, Roy Millenson, George Perlman, Bernie Resnick, Alex Rosenberg, Alan Swoff, Ron Treinish and Herb Wisner.

Membership Information

Steven L. Frank has moved to 261 Congressional Lane, #718, Rockville, MD 20852.

Reservation Form

**Vatikkim Luncheon
Thursday, July 18, 1996**

Please reserve _____ places for me at the Vatikkim luncheon.

Enclosed is my check for \$_____.

Name: _____

Phone Number: _____

**Please have your response reach us
by July 16, 1996.**

No reservations will be accepted after this date.

Baruch Dayan Emet

Congregation Beth El offers its sincere condolences to Ira Hoffman on the death of his father, Max Hoffman.

High Holiday Honors

If you would like an honor at the High Holiday services, please contact Rabbi Maltzman's office in June.

And the Winners Are...

Congratulations to the winners of the 1996 Congregation Beth El raffle! At the drawing during the Congregation Meeting on May 28th, Alan and Corinne Swoff won the grand prize of free membership at Beth El for 1996 - 97. A Day on the Bay, donated by Murray and Marilyn Hammerman, was won by Selma Siegel. The \$50.00 gift certificate to the Judaica Shop, donated by Beth El's Sisterhood, was won by Robert and Julia Loeb. The \$50.00 gift certificate donated by Sutton Place Gourmet was won by Rose Kanovsky. The Mobil Travel Guides, donated by Walter Arnheim and Marsha Rehns, was won by David Siegel and Susan Brinn Siegel. Debra Friedmann's handmade mezzuzah was won by Brent Berger. The private parking space for the High Holidays, donated by Michael and Judith Platt, was won by Dennis Askwith and Sherlyn Goldstein-Askwith. The two 8x10 photo enlargements, donated by Joel and Joan Simon, were won by Jerry Ostrov and Roberta Baruch.

BETHEL SCROLL

Congregation Beth El of Montgomery County
8215 Old Georgetown Road
Bethesda, Maryland 20814

Rabbi Jonathan Z. Maltzman
Associate Rabbi William D. Rudolph
Rabbi Emeritus Samuel Scolnic
Hazzan Abraham Lubin
Executive Director Steven J. Kravitz
Educational Director Louis A. Nagel
Family Education Director Sarah L. Roark
Nursery School Director Ellen M. Darr
Youth Director Rachel B. Handloff
President Suzanne M. Bronheim
First Vice President Norman L. Eule
Second Vice President Benson D. Adams
Second Vice President Arthur N. Popper
Treasurer Susan Brinn Siegel
Financial Secretary Robert L. Koenig
Secretary Linda R. Lipson

Phone Number 301-652-2606
FAX Number 301-907-8559
Web Site <http://uscj.org/seabd/bethesbe/>

AFFILIATED WITH UNITED SYNAGOGUE OF CONSERVATIVE JUDAISM

Beth El Scroll, USPS Number 009813, is published semi-monthly, except monthly July and August, by Congregation Beth El of Montgomery County, 8215 Old Georgetown Road, Bethesda, MD 20814. Second-class postage rate paid at Bethesda, Maryland and additional mailing offices. POSTMASTER: Send address changes to Beth El Scroll, 8215 Old Georgetown Road, Bethesda, MD 20814.

The Evening Minyan

The following people are asked to help us with our daily Evening Minyan for the next four weeks. On Monday through Thursday, the Minyan begins at 8:00 p.m. and concludes at 8:15 p.m. During the week of your assignment, we would appreciate your attending as many evenings as possible, so that those who are saying Kaddish will have a minyan that they can attend at Beth El.

July 1 - July 4

Beverly Ross
Benjamin Ross
Dennis and Deborah Ross
Steven and Lori Ross
Henry and Sheila Roth
Aileen Rothschild-Seidel
Isaac and Blanche Roubein
Irene Routhenstein
Isadore Routhenstein
Alexander and Nadya Roytblat
David Rubin
Israel Rubin
Kenneth and Susan Rubin
Robert and Fran Rubin
Ronald and Nancy Rubin
Samuel and Rose Saady
Daniel and Ruth Sachs
Howard and Tricia Sachs
Karen Safer
Roberta Safer
William and Helene Safire
Robert Samet and Janice Raffel
Lawrence Sank
Jorge and Sharona Sapoznikow

July 8 - July 11

Eleanor Sargent
Harry Saroff
Elias and Andrea Savada
Alejandro Schaffer
Edmund and Gerda Schechter
Harold and Elissa Scheinberg
Alan Scher and Toby Silverman
Edmund and Charlene Scherr
Jacques and Fortune Schettewit
Mark and Kimberlee Schifrin
Barry and Elinor Schimel
Jane Schimel
Peter and Stephanie Schissler
Benjamin and Joyce Schlesinger
James and Brenda Schmand
Herman and Minna Schneider
Howard and Shira Schneider
Kate Schneider
Andrew Schoenholtz and Janice Liebowitz

July 15 - July 18

Lewis Schrager and Frances Marshall
Tom and Sarine Schrank
Jonathan and Carla Schraub
Jay and Wendy Schuler
Brian and Cookie Schulman
David and Sonja Schultz
Michael and Faith Schwartz
Stanley and Carole Schwartz
Ira and Deborah Schwarz
David and Juliann Schwinger
Daniel and Freda Segal
Donald and Sharon Segal
Gladys Segal
Jack and Lila Segal
George and Carol Sege
Elliott and Leslie Seiden
Stuart and Marjorie Seides
David and Rochelle Seitzman
Joseph and Judith Semo
Ted and Kay Senator

July 22 - July 25

Mark and Sabina Shalom
Michael Shalom
Erwin and Elaine Shalowitz
Barry and Carolyn Shanoff
Edward and Roslyn Shapiro
Howard and Eve Shapiro
Melvyn and Rosalie Shapiro
Sarah Shapiro
Vadim and Alla Shapiro
Leonard and Sylvia Sheeskin
Alan and Vivi Sheff
Sholom and Adele Shefferman
Victor and Isobel Sheifer
Andrew and Judy Sherman
Carole Sherman
Darryl Sherman and Sara Greenbaum
Douglas and Carol Sherman
Esther Sherman
Gerald and Lola Sherman
Leon and Frances Sherman

Computer Committee

We are forming a computer committee that has the goal of enhancing computer facilities in the Beth El offices. The committee will evaluate current computer use, recommend changes in hardware and software, recommend equipment, install the equipment and train the staff. If you have expertise in any aspect of this task, please call Arthur Popper at (301) 460-5599 or EMAIL to Popper@zool.umd.edu

SUKKAH BUILDING KIT

OR DO-IT-YOURSELF INSTRUCTIONS

ORDER EARLY THIS YEAR!

Sukkot begins this year on **Friday night, September 27th**. For the ninth year Congregation Beth El is offering an easy-to-assemble, moderately priced Sukkah kit to enhance your enjoyment of the holiday.

The complete kit will produce a free-standing 8' x 8' x 8' square frame Sukkah made of #2 spruce. All necessary holes are pre-drilled and hardware (bolts, wing nuts, corner braces) and directions for assembly are included. Tools required are pliers, wrench, or nutdriver. You will need to provide your own siding (such as sheets, shades, or plastic), roofing branches, and decorations.

Pictures of the assembled Sukkah can be seen on the synagogue bulletin board near the office and in the Nursery School Hall. The Sukkah put up by the Nursery School is from a Beth El kit.

THE COST OF EACH COMPLETE KIT IS \$95 (which covers the cost of materials and a contribution to the synagogue). A limited number of kits are made during the summer and will be sold to the first people from whom we receive payment. MAIL IN YOUR ORDER SOON TO AVOID DISAPPOINTMENT SINCE WE ARE EXPECTING THE KITS TO SELL OUT AGAIN THIS YEAR.

Call Jerry Danoff at (301) 365-1180 for further information. Kits can be picked up at the home of Pat and Jerry Danoff, 6740 Greentree Road, Bethesda, by arrangement in September. (Be prepared to carry home several pieces of 8' lumber).

For Do-It-Yourselfers:

An instruction packet including directions for purchasing the materials and completely making the Sukkah yourself is also available. We have plenty of copies and will mail them anywhere you wish.

THE DO-IT-YOURSELF INSTRUCTIONS COST \$6 and include an exact shopping list of lumber and hardware needed, plus directions for how to cut the wood, drill the holes, and assemble the Sukkah.

Please complete the order form below and send it with your check made payable to "Congregation Beth El" to Pat Danoff, 6740 Greentree Road, Bethesda, Maryland 20817. Please write Sukkah kit or Sukkah instructions on the check.

Sukkah Order Form

I would like to order _____ complete Sukkah kits at \$95 each. (instructions included.)
Kits can be picked up in September.

I would like to order _____ do-it-yourself Sukkah instructions at \$6 each.
Packets will be mailed upon receipt of your order.

A check for \$ _____ is enclosed.

Name _____

Address _____

City _____ State _____ Zip _____

Phone No. _____

Beth El Sixth Graders Spend Shabbat in Brooklyn

Twenty-five sixth grade students from the Beth El Religious School participated in a weekend program of activities as guests of the Jewish Education Program in Boro Park, Brooklyn from April 20th to 22nd. The Boro Park community is a large area that is almost 100% Jewish with a mix of Orthodox and Hasidic families. This was the first year for our participation in this program. The students and chaperons stayed with Orthodox families, participating with the host families in their traditional Shabbat. They also had group learning and fun-oriented activities as part of experiencing and learning about the Orthodox approach to Jewish living. On Sunday, the group visited Ellis Island before departing New York City to return to Bethesda.

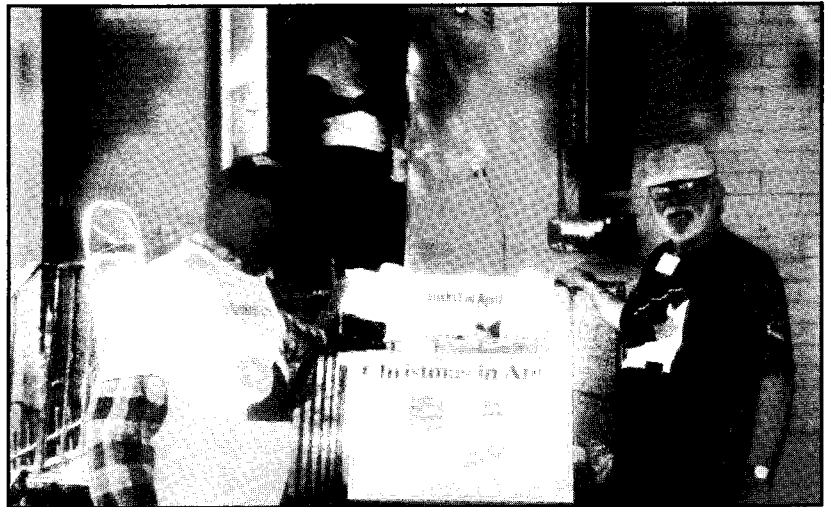
Participants in the trip were Religious School Director Louis Nagel, parents Bert King, Jeff Glick, Jonathan Levy, Myra Altschuler, Emily Goldman and Diana Pankowski and students Ariella Pankowski, Jessica McDonald, Allison Lipsit, Diana Stern, Sarah Segal, Rebecca Kazzaz, Rachel Claxton, Elizabeth Goldman, Rachel Fersh, Dara Postar, Daniel Altschuler, Alexander Baldinger, Ariel Goldberg, Phillip Arnheim, Calvin Cooper, Elliot Lesser, Gregory Smolen, Micah Siegel, Aaron Levy-Forsythe, Jesse Hochheiser, Joshua Glick, Jacob King, Zachary Lipson, Gregory Schneider and Seth Niedermayer.



Beth El Participates in Sukkot in April

As part of the Social Action program of Beth El, fifteen volunteers, including students from the tenth grade Religious School class, again took part in the Sukkot in April program on April 28, 1996. They worked on a small two-story row house at 8th and T Streets, N.W., near Howard University Hospital. The kitchen floor, from the joists up, was replaced, the kitchen walls repaired and painted, a new kitchen sink installed, the upstairs halls painted, the roof repaired, locks put on doors, lights rewired, trash hauled away and exterior areas caulked and painted. A special thanks goes to coordinator Ed Koenig, who spent three days working on the house, and to his co-coordinator, Bert King.

Volunteers were Judith Matz, Talia Matz, Jonathan Simon, Ilana Simon, Mike Berman, Roy Levy, Jonathan Binder, Max Goldman, Joshua Turnbull, Rosine Nussenblatt, Valerie Nussenblatt, Rhonda Kleiner Lowell, Michael Platt, Judy Platt and Steven Koenig.



Ed Koenig and members of the Anderson Family

The College Fund

The College Outreach Committee seeks to maintain or re-establish the connection of our college students to Beth El. The committee is planning social events that will take place during the summer months and winter recess, and we will be shipping holiday packages to each student. Your contributions to the College Fund are needed so that we may expand our program and strengthen the Jewish identity of our college students. If you have any questions, please call Esther Wilner at (301) 320-2478.

Nitzanim

Nitzanim Shabbat Services are held on the second and fourth Saturdays of each month at 10:30 a.m. in the All Purpose Room. A special service for children ages six and under and their parents, Nitzanim Shabbat Services feature a Torah parade, stories, lots of songs and a snack. We hope you will join us!

Congregation Beth El Gratefully Acknowledges the Following Contributions (As of May 23, 1996)

Bendit Adult Institute Fund

In Memory Of: Arnold E. Safer by Alice and Sherman Schacter.

Beth El Forest

In Honor Of: Birthday of Leon Sloss by Benson and Natalie Adams; Your caring for Charlotte by Dot, Bea and Stan. In Memory Of: Irving Zimmerman by Milton and Faye Doberman; Charlotte Quint by Naomi and Martin Levy; Father-in-law, Harry Possick by Marcia Possick; Beloved wife, Dubby Freedman by Henry Freedman.

Cantor's Fund

In Honor Of: Hazzan Lubin's help with Richard's Bar Mitzvah by Ina and Jerome Wernick; Nancy Rose's Bat Mitzvah by Patricia Forsythe and Jonathan Levy. In Memory Of: Sharon Tievsky's father, William Leibenhaut, by Myra Lyons; Marianne Schissler by Peter, Stephanie and Andy Schissler; Lewis Siegel by Anne Siegel Ball.

Chevre Kadisha Fund

In Memory Of: Carl Greenberg by Brenda and Jim Schmand.

College Fund

In Honor Of: Rabbi Rudolph's help with Richard's Bar Mitzvah by Ina and Jerome Wernick; Danny's graduation from Amherst College by West Bethesda Havurah; Marcia's graduation from High School by West Bethesda Havurah; Charles Fiedelman's 82nd birthday by Judith and Dan Matz. In Memory Of: Louis Freiberg by Karl Freiberg.

Conservative Judaism in Israel

In Memory Of: Gabriela Bechick's father by Marilyn and Gary Wind.

Feld Memorial Lecture Endowment Fund

In Honor Of: Judith Newman by Sigmund and Carolyn Shapiro. In Memory Of: Arthur Feld by Sigmund and Carolyn Shapiro.

Fine Arts Fund

In Honor Of: 50th wedding anniversary by Bernard and Sylvia Laps; Recovery of Paul Stein by Bernard and Sylvia Laps. In Memory Of: Joseph and Robert Laps by Bernard and Sylvia Laps; David and Molly Levin by Dr. and Mrs. Bernard Laps; Mother of Harvey Sherzer by Dolly and Marvin Band.

General Fund

In Memory Of: Irving Zimmerman by Gordon and Myra Gondos, Southern Distributors, Inc., Martha Friedman and Ruth and Ray Pinkson; Paula Sidler by Saul and Elizabaeth Pleeter; Sarah Silvermintz by Rene Zitter; Gabriela Bechick's father by Warren and Judith Greenberg.

Israel Experience Teen Fund

Craig Dreiling and Amanda Ford. In Memory Of: Irving Zimmerman by Ellie and Sam Frishman; William Liebenhaut by Amy and Gene Goott; Martin Popper by Arthur N. Popper; Selma Apfel by Helen Popper.

Kimball Nursery School Fund

In Honor Of: Melanie Darr's graduation by Jeff and Miriam Davidson. In Memory Of: Leonard Ross by Joan Levy and Julie Murray.

Library Fund

In Memory Of: Irving Zimmerman by Sam and Evelyn Margolis; Nettie Rauch, mother of Ruth Ann Heckman, by Marilyn and Daniel Kweller; Janet Goldhill's father by Ina and Jerome Wernick.

Mazon

In Honor Of: Ari Raphael Schoenholtz's Bar Mitzvah by Janice Liebowitz and the Schoenholtz Family; Bar Mitzvah of Samuel M. Ganzfried by Samuel M. Ganzfried; Recovery of Reba Hirsh by Milton and Faye Doberman; Sylvia Bozof's recovery by Milton and Faye Doberman. In Memory Of: Trudy Haber by The Haber Family; Norman Weinberg by Franz B. Wolf; Samuel Rauch by Ruth Ann Heckman; Samuel Zuckerman by Milton and Faye Doberman; Irving Landau by Marilyn and Daniel Kweller; B. Watson by Etta W. Zuckerman; Rose Gordon Mintz, mother of Daniel Mintz, by Daniel Mintz; Richard Gordon Jacobson by Jason Jacobson.

Mintz Landscaping Fund

In Honor Of: David and Carole Metzger's special birthday by Mary Dubrow. In Memory Of: Beloved mother, Lily Ann Altschul, by Carolyn Feigenbaum; Melvin Mancher by Rhoda R. Mancher; Bella Kaplovsky by Lillian Miller.

Morning Minyan Fund

In Honor Of: Murray Haber's big birthday by Bea and Ed Golfer; Birthday of Judy Newman by Bea and Ed Golfer; Bat Mitzvah of Deborah G. Leibowitz by Etta Kline; Martin Dembo's special birthday by Etta Kline; Complete recovery of Shirley Gross by Marilyn and Daniel Kweller; Murray Haber's 80th birthday and Kovod Award by Gary and Rachelle Bernstecker. In Memory Of: Irving Zimmerman by Bea and Ed Golfer, Etta Kline, Lenore and Melvin Richter, Hellaine and Erwin Nepo and Lillian Kessler; Father of Gabriela Bechick by Bea and Ed Golfer; Beloved mother, Gertrude Kossman, by Mary Dubrow; Beloved father, Boruch Lieber, by Sheila Lieber; Ruth Greenberg by Leonard Greenberg; Gussie Shapiro and Anne Bayer by Linda Greenberg; Charlotte K. Millenson by Roy Millenson.

Prayerbook Fund

In Honor Of: Jennie Barr by Dr. and Mrs. Solomon Barr; 85th birthday of Uncle Martin S. Dembo by Helen Beryl Friedkin. In Memory Of: Minnie Nepo by Irwin Nepo; Minna Feldman by Gary and Nancy Feldman.

Rabbi's Fund

In Memory Of: Leonard Ross by Edward and Debra Bloom; William Leibenhaut, father of Sharon Tievsky, by Marvin and Arleen Tievsky; Ludwig Meyerhoff by Frances Bechick and Family; Erika Greenebaum by Karl Freiberg; Charlotte Zassenhaus by Harold Zassenhaus; Imre Miselbach by Magda Miselbach and Kathy Litvak.

School Enrichment Fund

In Honor Of: Louis Nagel by Susan Levine and Bob Janney. In Memory Of: Father of Janet Goldhill by Katie, Joe, Rose and Stephen Kohn; Sharon Tievsky's father, William Leibenhaut, by Toby and Bernie Moss, Marilyn and Gary Wind and Susan and Bert King.

Sisterhood Hospitality Fund

In Memory Of: Justin Finger by Sarah Roark.

Sisterhood Remembrance Fund

In Memory Of: Richard Fulton by Roy H. Millenson.

Sisterhood Torah Fund

In Memory Of: Janet Goldhill's father, Justin Finger, by Marilyn and Gary Wind.

Social Action Fund

In Honor Of: Libby Elson by Alan and Joan Kliger; Bar Mitzvah of Ari Schoenholtz by Nancy Rose and Bob Lipman. In Memory Of: Father, Joseph S. Leavitt, by Stephanie Ventura; Janet Goldhill's father by Ruth Z. Sichel; Cheryl Rod's mother by Ruth Z. Sichel.

Torah Scroll Fund

In Honor Of: Murray Haber's 80th birthday by Marilyn and Gary Wind. In Memory Of: Sharon Tievsky's father, William Leibenhaut, by The Weinstein Family; Yaacov Schettewi by Mr. and Mrs. J. Jacques Schettewi; Janet Goldhill's father by Mr. and Mrs. Howard Copperman.

Vatikim

In Honor Of: Judy Newman's 80th birthday by Marilyn and Gary Wind and Gary and Rachelle Bernstecker; Recovery of Reba Hirsh by Clare Lerner; Sylvia Bozof's complete recovery by Calvin and Norma Golumbic. In Memory Of: Irving Zimmerman by Sam Nash and Clare Lerner; Richard Arnheim by Walter Arnheim and Marsha Rehns.

Young Equality Fund

In Memory Of: Sarah Weinstein and Nathan Weinstein by Ina and Joe Young.

Sisterhood News

Torah Fund

by Doris Povich and Cathy Binder,
Torah Fund Co-Chairs

On April 28th our Sisterhood Torah Fund reception was held at the beautiful home of Susan and Harvey Sherzer. Dunya Hecht received the Torah Fund Award for her dedication and generous service to Sisterhood.

We wish to thank those who helped to make the fundraiser a success: the Sherzers, our gracious hosts; Paula Siegel, Sisterhood President; Marilyn Wind, who presented the award; Hazzan Lubin and his accompanist, who entertained with beautiful Hebrew, Yiddish and English songs; Dorothy Beverly, who prepared a delicious salmon entree; and Janet Goldhill for all her time and effort.

We were able to raise \$3,000 for the Jewish Theological Seminary, contributed by those in attendance and many others who support the important programs and courses of the J.T.S. The Seminary educates our rabbis, cantors and teachers. Beth El is pleased to recognize the following Benefactors: Bernice Blumenthal, Suzanne Bronheim, Elizabeth Drachman, Janet Goldhill, Dunya Hecht, Frances Leibowitz, Jackie Levine, Rhoda Mancher, Claire Marwick, Bette Nussbaum, Doris Povich, Paula Siegel, Trudy Weker, Harriet Wilkins and Marilyn Wind.

Nursery News

We have a few openings for school enrollment in the fall. Children must be two years old by September 1st to attend school. If you would like more information, please call the school information line at (301) 652-2606, ext. 344.

All in the Family

Mazal Tov to Marshall and Helene Katzin on the engagement of their daughter, Elise Katzin, to Dr. Glenn Stoller.

Mazal Tov to Howard and Jan Levine on the birth of their grandson, Jake Hudson Foer, on March 25, 1996. Jake is the son of Howard and Lauren Levine Foer of Bethesda.

Mazal Tov to Alan Spiegel on his recent election as President of Seaboard Region of USY.

Mazal Tov to Rabbi Jonathan Maltzman on his becoming President of the Baltimore - Washington Region of the Rabbinical Assembly of America.

Mazal Tov to Debra Birnkrant on receiving the Arthur S. Flemming Award for Outstanding Scientific Contribution for Federal Employees.

Please Join us for Beth El Sisterhood's

NEW MEMBERS' TEA

Wednesday, June 26th 7-9:00 p.m.

at the Webbers' House

7607 Exeter Road, Bethesda,

Casual Dress

RSVP by June 17th to: Laurie Webber (301) 652-1510 or
Phyllis Solomon (301) 424-4467

June 28, 1996 - July 25, 1996

SUNDAY MONDAY TUESDAY WEDNESDAY THURSDAY FRIDAY SATURDAY

					28 6:30pm Friday Evening Service 8:20pm Candles	29 7:30am & 9:15 a.m. Shabbat Services 9:15am Emily Eckland B/M 9:15am Rebecca Mandel B/M
30 9:00am Minyan - Chapel 9:30am Men's Club - SH 1:30pm Black - Jewish Dialogue - BR	1	2 6:30pm Aerobics - SH	3	4 Office Closed Fast of 17th of Tammuz Independence Day 9:00am Minyan	5 6:30pm Friday Evening Service 8:19pm Candles	6 7:30am & 9:15 a.m. Shabbat Services 9:15am Elizabeth Sheffield B/M
7 9:00am Minyan - Chapel 9:30am Men's Club - SH	8	9 6:30pm Aerobics - SH	10	11 12:00pm Vatikim - SH 6:30pm Aerobics - SH	12 9:00am-3:00pm BENS Camp - APR 6:30pm Friday Evening Service 8:17pm Candles	13 7:30am & 9:15 a.m. Shabbat Services 9:15am New Torah Readers Shabbat - Tentative 10:30am Nitzanin - APR
14 9:00am Minyan - Chapel 9:30am Men's Club - SH	15	16 9:00am-1:00pm BENS Camp - SH 6:30pm Aerobics - SH	17	18 12:00pm Vatikim Luncheon - SH 6:30pm Aerobics - SH 7:30pm 50+ Singles Mtg. - APR	19 6:30pm Friday Evening Service 8:13pm Candles	20 7:30am & 9:15 a.m. Shabbat Services 10:00am Gan Shabbat - MR 10:00am-1:00pm USY - BR 10:00am Learners Minyan - APR
21 9:00am Minyan - Chapel 9:30am Men's Club - SH	22	23 6:30pm Aerobics - SH	24 8:30pm Minyan and Tisha B'Av Services - Chapel	25 Fast of Tisha B'Av 6:30pm Aerobics - SH		

Minyanim: 7:30 a.m. and 8:00 p.m.

CONGREGATION BETH EL
of Montgomery County
8215 Old Georgetown Road
Bethesda, Maryland 20814

Second Class
Postage
Paid at
Bethesda, MD 20814