

Off the Bimah

There was a fascinating interview with Wayne Huizinga in a South Florida Jewish magazine that I recently heard about. Mr. Huizinga gave one million dollars to the Jewish Federation of Broward County—and neither he nor his wife is Jewish! So the reporter asked him: How come you did that? And he gave a remarkably simple answer: “Because they asked me.” Indeed, all of the money in every single campaign of every single charity in the country is raised by people who ask. I know from personal experience that it is much easier to give money than it is to ask—but our tradition commands that “the one who persuades someone to do a mitzvah is greater than the one who does the mitzvah itself.” As one cynic quipped: “The whole trick in fund raising is to be sincere—if you can fake that, you’ve got it made!” Our Capital Campaign has been a remarkable success because of efforts made not only by the professionals, but by each and every one of you who reached out to solicit for a sacred task. As a result, we will now be able to make this building the kind of place where God’s presence will delight even more to dwell.

Rabbi Jonathan Z. Maltzman

April 7, 2000

2 Nissan 5760

VOLUME 49

No. 16

Shabbat and Passover Schedule

Friday, April 7

6:30 pm Friday Night Service

Saturday, April 8

7:30 and 9:15 am Shabbat Services

Tazria: Leviticus 12:1-13:59

9:15 am Erika Herman Bat Mitzvah

10 am Jr. Congregation

10:30 am Nitzanim, APR

11 am Shitufim Minyan, Room 209

12:30 pm Perek Yomi, Chapel

7 pm Dana Footer Bat Mitzvah

Friday, April 14

6:30 pm Friday Night Service

Saturday, April 15

7:30 and 9:15 am Shabbat Services

Shabbat HaGadol

Metzora: Leviticus 14:1-15:33

9:15 am Jaclyn Feldman Bat Mitzvah

10 am Jr. Congregation Learners' Minyan,

APR Gan Shabbat, MR

12:30 pm Perek Yomi, Chapel

Wednesday, April 19

Erev Passover - 1st Seder

7:15 am Fast of the Firstborn and Siyyum

1 pm Offices Close

6:30 pm Festival Service

Thursday, April 20

1st Day Passover - 2nd Seder

Schools and Offices Closed

9:15 am and 6:30 pm Festival Services

7 pm Congregation Seder

Friday, April 21

2nd Day Passover

Offices and Schools Closed

9:15 am Festival Service

6:30 pm Friday Evening Service

Saturday, April 22

3rd Day Passover

7:30 and 9:15 am Shabbat Services

Exodus: 33:12-34:26; Numbers: 28:19-25

9:15 am Erica Rotman Bat Mitzvah

10 am Grandparents Jr. Congregation

10:30 am Nitzanim, APR

12:30 pm Perek Yomi, Chapel

Tuesday, April 25

6th Day Passover

3 pm Offices Close

6:30 pm Festival Service

Wednesday, April 26

7th Day Passover

Offices and Schools Closed

9:15 am and 6:30 pm Festival Services

Thursday, April 27

8th Day Passover

Offices and Schools Closed

7 and 9:15 am Festival Services (Yizkor at both services)



Sisterhood News

Upcoming Activities

On April 16, Flora Singer will present an overview of Yiddish literature and discuss Chaim Grade's *My Mother's Sabbath*. For more information, call Annette Moshman (3) 229-4040, or Andrea Golden (3) 294-2375.

Are you curious about your ancestors? Want to learn how to help future generations learn about their ancestors? Join us on Sunday, April 30 for "L' Dor v'Dor," a Generation to Generation program. You can choose from three workshops: (1) how to put together a family album which can be preserved for future generations; (2) how to trace family history and roots through recipes; and (3) learn from a member of the Jewish Genealogical Society how to assemble a family tree. For more information, call Barbara Friedman at 301-947-1428.

Reminders

Your subscription to *Washington Jewish Week* can benefit Sisterhood at no additional cost to you. Call Leslie Dellon, 301-530-4645, for more information.

The Sisterhood Catering Committee can always use some volunteers to help on a regular basis with the Shabbat kiddushim and luncheons. Jackie Levine, 301-299-9507, or Joan Claxton, 301-320-9283, can tell you how you can get involved in this worthwhile activity.

Sisterhood has beautiful, special greeting cards available for all occasions. Proceeds from the cards benefit the Jewish Theological Seminary. Call Rita Kahn, 301-654-7716, to purchase cards.

The Sisterhood Judaica Shop is open on Thursdays and Sundays from 9 am to Noon or by special appointment. Check out the lovely new items in stock.

An easy way to get information about Sisterhood or to leave messages, is to call the Sisterhood hotline number 301-652-2606, ext. 333. Calls will be answered as quickly as possible.

Celebrate Israel

The Sisterhood **Celebrate Israel** program on March 5 was a wonderful afternoon for all those who attended. Participants ate a delicious lunch of Israeli dishes, viewed art from Moriah Gallery, and did Israeli dancing. The highlight of the afternoon was the original composition, "Israel: A Miracle in Our Time," which was performed by our own Hazzan Abraham and Sandy Lubin. Sisterhood wishes to thank the many people listed who helped to make the program such a success: **Co-Chairs:** Pat Danoff and Esther Wilner; **Luncheon and Decoration Chair:** Tamar Fishman; **Musical**

Program: Hazzan Abraham Lubin, Sandy Lubin and George Peachey; **Art Show:** Ofer Sampson of Moriah Gallery; **Israeli Dancing:** Rocky Korr; **Reservations:** Toby Moss; **Chefs:** Tamar Fishman, Yael Greenberg, Varda Nowitz, Tutti Sokol, Esther Wilner; **Sous Chefs:** Michlean Amir, Emily Goldman, Janice Liebowitz, Truda Lowy, Mimi Tygier, Laurie Webber; **Set-Up and Other Help:** Betty Baer, Judy Baldinger, Julia Copperman, Adam Danoff, David Danoff, Jerry Danoff, Pat Danoff, Leslie Dellon, Gale Dutcher, Sam Fishman, Dale Gold, Judy Goldman, Michele Herman, Marcia Kalman, Eileen Meier, Gerda Schechter, Marilyn Wind. Tapes Available

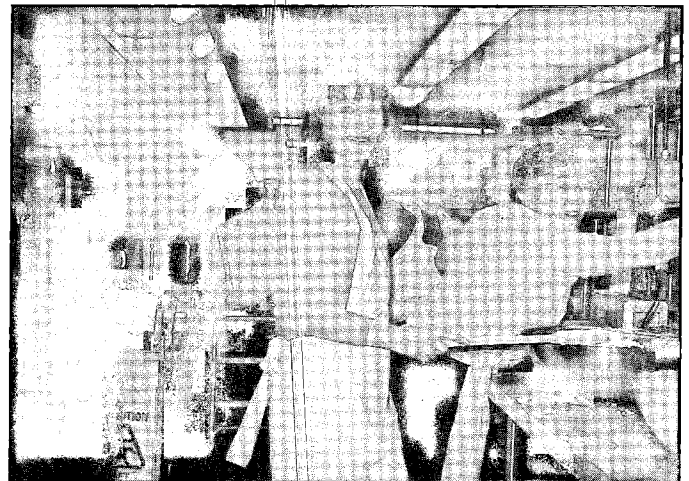
Cassette tapes of Hazzan Abraham and Sandy Lubin's live performance of "Israel: A Miracle in Our Time," as heard at the Sisterhood **Celebrate Israel** program on March 5, are available in the Judaica Shop or from the synagogue office. The cost is \$6.00.

A Sisterhood Special for a Special Sisterhood

Have we got a deal for you! If you intended to join Sisterhood, but just haven't gotten around to it, and now you think you might as well wait until next year, we urge you to become a Sisterhood member now. For a limited time only, we will offer membership at the special price of \$18.

If you are not yet a Sisterhood member, we hope you will take advantage of our exciting programs as well as our reduced price. If family and work commitments limit your involvement in Sisterhood at this time, we hope you will consider membership as a means of offering financial support our congregation.

Please send your check, payable to Beth El Sisterhood, either to Beth El Sisterhood, 8215 Old Georgetown Road, Bethesda, MD 20814, or to Toby Moss, 10301 Dickens Avenue, Bethesda, MD 20814.



Sisterhood women prepare lunch for Celebrate Israel program

New Minyan Chaverim to Start April 8

The new Minyan Chaverim will meet on the second Shabbat of each month beginning on April 8 in the Meeting Room from 9:30 am to Noon. Minyan Chaverim is a community-led service, featuring complete recitations of Shacharit and Musaf as well as a full Torah reading and emphasizing a spirited and participatory nusach. After the synagogue kiddush, participants (and for that matter, all comers) will also be invited to attend a pot-luck (Kosher dairy) lunch at a nearby home, which will include a Torah discussion, zmirot, and plenty of good kbitzing. For more information, please contact Debbie Feinstein at dfeinstein@cromor.com or 301-767-1178.

It's Not Too Early to Start Thinking About the High Holidays!

Anyone interested in reading Torah or chanting Haftarah on the second day of Rosh Hashanah at DoubleTree Hotel, please contact Benson D. Adams at 301-652-2606, ext. 330.

From the President

My thanks to Helen Popper for organizing, assembling, and supervising the production and publication of our new beautiful Congregation Directory. Now that we have done it one time, the next time should be easier, right Helen? I know the Congregation will find this most useful, will send in suggestions for additional material and corrections for the next edition scheduled for around Thanksgiving, and is most appreciative to you for making this resource available.

My thanks also to Tamar Fishman for the beautiful Directory cover that picks up the color themes of the tapestries hanging in the Sanctuary. My thanks and compliments to the both of you for a job well done.

Benson D. Adams, President

Membership Directory

The 2000 Membership Directory has been mailed. If you haven't received it yet, you will shortly. To ensure accuracy, please do not call the synagogue office with any corrections, changes, additions, or deletions. Instead, please send all information in writing to the synagogue office by regular mail, fax, or E-mail. Please **TYPE** or **PRINT VERY LEGIBLY**.

Volunteers Needed for Sukkot in April

Every year Sukkot in April puts real meaning into the phrase *tikkun olam* - repair the world. Last year 400 area Jewish volunteers, including 14 from Beth El, repaired the worlds of a dozen lower income families. This year we will again participate in this program (along with other volunteers for Christmas in April) on Sunday, April 30. Bert King and Jonathan Binder are coordinating the project for Beth El. Please contact Bert King, 301-652-7350, with questions or to volunteer.

Membership Information

Change of address: **Werner and Bernice Blumenthal**, 3233 Ludham Drive, Silver Spring, MD 20906, 301-598-8960. Change of phone number: **Mark and Lisa Bronfman**, 301-365-1699; **Adam and Amy Goldstein**, 301-962-9348.

BETH EL SCROLL
Congregation Beth El
of Montgomery
County
8215 Old Georgetown
Road, Bethesda,
Maryland 20814-1451

Rabbi
Jonathan Z. Maltzman
jmaltzman@bethelmc.org
Associate Rabbi
William D. Rudolph
wrudolph@bethelmc.org
Rabbi Emeritus
Samuel Scolnic
Hazzan
Abraham Lubin
alubin@bethelmc.org

Educational Director
Louis A. Nagel
lnagel@bethelmc.org
Family Education Director
Sarah L. Roark
sroark@bethelmc.org
Nursery School Director
Johanna M. Sohinki
jsohinki@bethelmc.org
Youth Director
Ariele Hausner-Barach
ahausner-barach@bethelmc.org

President
Benson D. Adams
badams@bethelmc.org
First Vice President
Arthur N. Popper
apopper@bethelmc.org
Second Vice President
Susan J. Levine
slevine@bethelmc.org
Second Vice President
Gail H. Ross
gross@bethelmc.org
Treasurer
Judy C. Futterman
jfutterman@bethelmc.org

Financial Secretary
Gary S. Marx
gmarx@bethelmc.org
Secretary
Brent A. Berger
bberger@bethelmc.org
Publications Chair
Helen A. Popper
hpopper@bethelmc.org
Phone Number
301-652-2606
FAX Number
301-907-8559
Web Site
www.bethelmc.org

AFFILIATED WITH UNITED
SYNAGOGUE OF
CONSERVATIVE JUDAISM

Scroll, USPS Number 009813, is published semi-monthly, except monthly July and August, by Congregation Beth El of Montgomery County, 8215 Old Georgetown Road, Bethesda, MD 20814. Periodical postage rate paid at Bethesda, Maryland and additional mailing offices. POSTMASTER: Send address changes to **Scroll**, 8215 Old Georgetown Road, Bethesda, MD 20814.

Evening Minyan

The following people are asked to help us with our daily Evening Minyan for the next two weeks. On Sunday through Thursday, the Minyan begins at 8 pm and concludes at 8:15 pm. **The Wednesday Evening Minyans during this two-week period are at 8:20 pm due to Saul Bendit Adult Institute sessions.** During the week of your assignment, we would appreciate your attending as many evenings as possible, so that those who are saying Kaddish will have a minyan that they can attend at Beth El.

April 9 to April 13

Brian and Cookie Schulman
David and Sonja Schultz
Mark and Trish Schutz
Jeff Schwaber and Elizabeth Schrayner
David and Madelyn Schwartz
Michael and Faith Schwartz
Stanley and Carole Schwartz
Stanley and Susan Schwartzbart
Deborah Schwarz
Ira Schwarz
David and Juliann Schwinger
Samuel and Judith Scolnic
Susannah Scott
Daniel and Freda Segal
Donald and Sharon Segal
Jack and Lila Segal
George and Carol Sege
Stuart and Marjorie Seides
David and Rochelle Seitzman
Joseph and Judith Semo

April 16 to April 20

Ted and Kay Senator
Elliot Shaller and Ellen Werner
Mark and Sabina Shalom
Michael Shalom
Erwin and Elaine Shalowitz
Barry and Carolyn Shanoff
Edward and Roslyn Shapiro
Howard and Eve Shapiro
Howard Shapiro and Shirley Brandman
Melvyn Shapiro
Sarah Shapiro
Vadim and Alla Shapiro
Bernard Sharfman and Susan David
Ruth Shartsis
Leonard and Sylvia Sheeskin
Sholom and Theda Shefferman
Victor and Isobel Sheifer
Andrew and Judy Sherman
Darryl Sherman and Sara Greenbaum
Esther Sherman

Taking Charge of Your Future: A New Beth El Workshop on Separation and Divorce

Making a decision to separate or divorce is always a painful one. For people who have made that decision, it is useful to have as much specific information as possible. Understanding your own reactions and feelings, and those of your children can help you cope with the situation more effectively.

This workshop will take place on three successive Mondays in May, beginning May 1. Sessions will take place in the Board Room, 7:30-9 pm. There will be no charge.

The sessions are organized around the following topics (you are welcome to attend all or some sessions):

Session 1 (May 1): I'm Getting Separated/Divorced: Now What? What to expect emotionally, socially, financially; what might the impact be on your children, on family and friends; mediation and litigation options.

Session 2 (May 8): What Do We Do About the Children? What parenting plan to try; how do parents communicate; how much say do the children have.

Session 3 (May 15): Re-Entry Into the Single Scene: How Do I Do It? What do you need to think about; where to go; choices to make.

Leading the workshops will be the Co-Directors of the Bethesda Group, Naomi Greenwood, LCSW-C and a member of Beth El, and Karen Freed, also LCSW-C. Theirs is a private psychotherapy practice which specializes in issues of separation and divorce and remarriage. To present Jewish perspectives on the topics of each session will be our own Rabbi Bill Rudolph.

To register, or for more information, please contact Rabbi Rudolph at 301-652-2606, ext. 318.

Beth El Cemetery Section at Judean Gardens

Cemetery sites are currently being sold at Judean Gardens in Olney, Maryland. Beth El's first section is full and a new section is now available. The charge is \$1,250. Please contact Carole Wellner at 301-652-2606, ext. 316 to receive our brochure.

Vatikkim

Because of Passover, there will be NO Vatikkim meeting/lunch on April 20 and 27.

Men's Club News

You are invited to attend the Beth El Men's Club's regular Sunday breakfast programs and to join the Men's Club. The Men's Club supports programs including the renowned Perspectives in Dialogue series, political forums, awards and other events.

The Men's Club also sponsors youth programs including scouting, the Purim Carnival, the annual Magic Show, Israeli scholarships, school books, Bar Mitzvah kiddush cups, and other important activities. Your participation makes it possible! For membership information, please call Marvin Yudkovitz at 301-564-4580.

The Men's Club is pleased to announce the first talk in the Perspectives in Dialogue series Sunday, April 9. The Perspectives in Dialogue series has annually brought an exceptional lineup of speakers, and this year is no exception. Pastries and coffee are served at 9:30 am, following the Minyan, and the program begins at 10 am. The second Perspectives talk will be on Sunday, April 16. The last two Perspectives programs will be on April 30 and May 7.

Our regular Sunday Morning Breakfast Programs will be held on April 23, and then will resume on May 14. Lox and bagel breakfasts start at 9:30 am (after the 9 am minyan), with the program from 10 to 11 am. All congregants are welcome. Check the Men's Club poster in the Rotunda for updated details. Upcoming programs:

April 9 1st Perspectives in Dialogue lecture:
Dr. Richard Hodes, Director, National Institute on Aging, "What Research Can Teach Us About Aging And Ourselves"

April 16 2nd Perspectives in Dialogue lecture:
Richard Joel, B'nai B'rith Hillel, "A Renaissance in American Jewish Life"

April 23 Beila Organic, Isaac Frank Jewish Public Library, "Romance of Early Hebrew Printers"

Men's Club and Sisterhood Spring Dance

Do you know your Jewish composers? This year the Men's Club and Sisterhood will be holding a dance on May 6. The dance will begin at 9 pm. The evening's music will feature only Jewish composers. Fortunately, we can enjoy the entire range of music due to the prolific Jewish writers we have.

If you know of some composers that you don't think others will know, tell us. We will be conducting contests throughout the evening. We will be serving great desserts, wine, beer, and other beverages. The cost for the evening will be \$18 per person. Anyone who is interesting in participating as a sponsor should contact David Levine, 301-299-9507, or Marvin Yudkovitz, 301-564-4580. Reservation forms are now available outside the synagogue office and will be in the next issue of the *Scroll*.

Beth El Men's Club
Invites the Congregation
To Join Us for the 26th Annual

Perspectives in Dialogue

A series of talks
by nationally known speakers
on topics of special importance
to our community

- | | |
|----------|---|
| April 9 | Dr. Richard Hodes
Director, National Institute on Aging
"What Research Can Teach Us About Aging and Ourselves" |
| April 16 | Richard Joel
B'nai B'rith Hillel
"A Renaissance in American Jewish Life" |
| April 30 | Eli Rosenbaum
Director, Office of Special Investigations, U. S. Dept. of Justice
"Nazi Criminality and Nazi Gold: Pursuing Justice a Half Century After the Holocaust" |
| May 7 | Linda Greenhouse
New York Times Supreme Court Correspondent
"Perspective on the Supreme Court" |

All talks will begin at 10:00 a.m.
Danish and coffee at 9:30

Religious School News

This year's sixth grade class went on our fifth annual Borough Park Shabbaton on the weekend of March 10-12. This is a remarkable experience in which we are hosted in traditionally observant homes and join that Orthodox, Brooklyn community in its observance of Shabbos. This year, 37 of our 51 sixth graders participated in the trip, along with six parent chaperones.

In their reflection pieces written in class after the trip and through a debriefing exercise, the vast majority of our students expressed a steadfast conviction that their Conservative Judaism is an authentic, meaningful expression of religious Judaism. They were increasingly inclined toward our "everyone on the same page" service and mixed seating. Students related wonderful experiences at the Shabbat dinner table, at Friday night services and in their interactions with their host families. They were impressed by the great warmth and hospitality shown them everywhere in Borough Park. They were tuned into the rhythms of the community, the Jewish names on the businesses on 13th Avenue, the nearly traffic-free streets on Shabbat, and the near total absence of televisions. We closed out the trip with a Sunday morning visit to Ellis Island after which we headed to the Lower East Side for lunch at the Delancey Street restaurant, Ratner's.

Our children do us proud by the sacrifices they make to go on this weekend trip, the enthusiasm and energy they put into their participation, the questions they ask of their host families and the program presenters and by their exceptionally good behavior. I would like to thank the sixth grade parents for their support for this activity. I also thank our chaperones, Jesse Baumgold, Bobby Benjamin, Linda Berns, Steffi Johnson, Toby Silverman and Lois Zuckerman for joining the group.

**RELIGIOUS SCHOOL
COMMITTEE
OPEN MEETING APRIL 10
8:15-9:00 PM**

Comments, suggestions, complaints about the Religious School? Here's your chance to voice them to the School Committee. All are welcome.

Remember the Summers When You Were Small?

If you are 14 years old or entering high school in September, become a Junior Counselor at Beth El Nursery School Camp, and help children ages 3-5 experience the fun and discovery that summer can bring.

The camp offers a supportive environment and activities including water play, games, field trips and arts and crafts.

Two camp sessions will run from June 20 to July 28, Tuesdays through Fridays, from 9:00 am to 1:15 pm, with additional set-up and clean-up days for staff.

Salary range depends on related work experience. To learn more about Junior Counselor positions, call (301) 652-2606, ext. 312.

From the Desk of the Youth Director

Can't wait until spring break to kick back with your friends and have a good time? Why wait? You can have an amazing time with your friends at Youth Group programs in April! This Sunday, April 9, Bonim is going to Putt-Putt, Machar is heading to the great outdoors for fun and games in the park, and Kadima is partying at the pool. USY will be visiting the residents of Spring House for Shabbat services on Friday, April 14. On Sunday, April 23, USY will be dancing the night away at the "Matzah Ball" at Tikvat Israel. USY will also be getting psyched for Spring Convention at "Spring Spirit Night" on Saturday, April 29. We can't wait to see everyone at these amazing events.

If you do not already receive the monthly youth bulletin and would like to, please call Ariele Hausner-Barach at 301-652-2606, ext. 308. You can always stop by her office for candy or to say hello. Suggestions and comments are always welcome.

"Seder Melodies" Tapes Available

To enhance your abilities to lead a traditional seder, copies of the tape "Seder Melodies," selected and sung by Hazzan Abraham Lubin, are available from Sarah Roark for \$8. Call 301-652-2606, ext. 320.