

From the Clergy

August 30, 2002

22 Elul 5762

Volume 52

No. 1

A year ago, two of us authored this column in this pre-High Holiday issue of the Scroll. In the very first sentence, we looked both backward and forward, writing these words: "The last six months have been an extremely difficult period in the life of Beth El, and there is little doubt that the coming months will present a whole new set of challenges for all of us." Little did we know how true that would be. We knew it would be a challenge to recreate the sense of trust and community that have made Beth El a warm and inviting home for so many for the last fifty years. We didn't know that September 11 would happen, or that the assault on Israel from within and without would become far more serious and worrisome.

Now, as we look backward and forward, we see the scars - from losses of some families from our membership rolls, from losses of our sense of security after September 11, and from losses of brothers and sisters who were victims of Middle East terrorism. But we see healing all around us as well. We see it in Beth El's determination to move forward, to fill our rabbinic ranks in a careful but decisive way, to celebrate our holidays with both seriousness and some new creativity (witness Simchat Torah and Purim). After September 11, we saw the healing in our spontaneous gathering

Continued on Page 3

Shabbat and High Holiday/Festival Services

Friday, August 30

6:30 pm Shiru Ladonai Shir Hadash - see pg. 7
6:30 pm Friday Evening Traditional Service - Chapel

Saturday, August 31

Nitzavim-Vayelekh: Deuteronomy 29:9-31:30
7:30 and 9:15 am Shabbat Services
9:15 am Samuel Griff Bar Mitzvah
9:15 am Alexander Einstein Gopen Bar Mitzvah
10:30 am Nitzanim - APR
12:30 pm Perek Yomi - Chapel
7:00 pm 7th Grade Selichot - Chapel
11:00 pm Selichot Service

Friday, September 6

Erev Rosh Hashanah
6:30 pm Service at Beth El only

Saturday, September 7

1st Day Rosh Hashanah
8:30 am Services at Beth El and Whitman
6:30 pm Service at Beth El only

Sunday, September 8

2nd Day Rosh Hashanah
8:30 am Service at Beth El only

Friday, September 13

6:30 pm Friday Evening Service
Saturday September 14

Shabbat Shuvah
Haazinu: Deuteronomy 32:1-32:52
7:30 and 9:15 am Shabbat Services
9:15 am Gabriel Loewinger Bar Mitzvah
9:15 am Adam Masurovsky Bar Mitzvah

10:00 am Jr. Congregation - Chapel

10:30 am Nitzanim - APR
12:30 pm Perek Yomi - Chapel
Sunday, September 15

Kol Nidre

6:45 pm Services at Beth El and Whitman

Monday, September 16

Yom Kippur
9:00 am Services at Beth El and Whitman
10:00 am Torah Reading
11:30 am Musaf/Sermon/Yizkor
3:00 pm High Holiday Seminars
5:15 pm Mincha
6:30 pm Neilah
7:45 pm Conclusion of Fast/Shofar

Friday, September 20

Erev Sukkot
6:30 pm Friday Evening and Festival Service
Saturday, September 21

1st Day Sukkot
7:30 and 9:15 am Shabbat and Festival Services
9:15 am William Aisenberg Bar Mitzvah
9:15 am Michael Morgenstern Bar Mitzvah
9:30 am Minyan Chaverim - APR
10:00 am Jr. Congregation - Chapel
11:00 am Shitufim - Rm. 209
12:30 pm Perek Yomi - Chapel
6:30 pm Festival Service

Sunday, September 22

2nd Day Sukkot
9:15 am Festival Service
9:15 am Elizabeth Spergel Bar Mitzvah



Sisterhood News

Thanks for a Great Picnic

On July 21st, Sisterhood and Nitzanim co-sponsored a picnic at Maplewood/Alta Vista Recreation Center to welcome Rabbi Greg Harris, his wife Rebekah, and son Benjamin. Congregants and family members representing all age groups enjoyed a picnic lunch and participated in a variety of activities. The kids are still talking about the bug hunt (they were plastic), and the water balloon toss. We would like to thank all those who made the arrangements, did the schlepping, and ran the games: **Alissa Horvitz, Rachelle Solkowitz, Audrey Winston, Eric Horvitz, Pat Danoff, Jerry Danoff, and Emily Danoff** (who filled 250 water balloons). Sisterhood and Nitzanim are hoping to make the picnic an annual event.



Sisterhood and Nitzamin co-sponsored picnic

Sisterhood Book Group Selections

Mark your calendars for the first two Fall meetings of the Sisterhood Book Group. Everyone is welcome to join us on October 6 at 9:30 a.m. for a discussion of *Total Recall* by Sara Paretsky, and on November 3 at 9:30 a.m. when the selection will be *The Book Borrower* by Alice Mattison. Call Andrea Golden at 301-294-2375 for information.

Calling All Cooks—We Need Your Recipes!

Remember to send in your recipes for the Beth El Sisterhood Cookbook. Recipe forms are available outside the office, in Scroll #16, on the Beth El website, or we will mail you as many as you need. Recipes will also be accepted on plain paper, if they follow the desired format or send your recipe by e-mail attachment to cookbook@bethelmc.org. It's easy, so send us the recipes you and your family love. Comfort food or gourmet, simple or Cordon Bleu, for Shabbat, holidays, or every day, we want and need them all! Recipes are due by October 31 but send them in now and avoid the rush. Call Rachelle Solkowitz at 301-897-8139 or Sara Greenbaum at 301-656-5263 for information or to receive forms.

Social Action News

Rosh Hashanah Project

Individuals and families interested in delivering Rosh Hashanah food packages to Russian immigrants in the Jewish community on Sunday, September 1, please contact Janice Liebowitz at 301-654-7377.

Annual High Holiday Food Drive

Welcome the New Year with an act of tzedakah – a bag filled with groceries for Montgomery County's neediest citizens. As you depart Rosh Hashanah services on Saturday, September 7, you will receive an empty shopping bag. Please return yours filled with non-perishable food items on Kol Nidre. Trucks from Manna Food Center, Montgomery County's non-profit food bank, will be at **Beth El** and **Whitman** from 6:00 until 6:45 p.m. Sunday evening, September 15 to receive the bags. Manna provides meals to 75 to 100 families per day, in addition to supplying county shelters year-round.

Inreach Committee

As part of the Inreach Committee, a new group is being formed called the Women's Health Support Network. This will be a resource for women to discuss health treatments, positive attitudes, and personal advocacy for life-threatening diseases such as cancer. If you would like to be part of this group or if you need some support at this time, please call Marge London at 301-718-1712.

Lost and Found

A number of unclaimed coats and jackets have been hanging in the synagogue coatroom for many months. Please check to see if any of them belong to your family. Garments not claimed by OCTOBER 1 will be sent to our associated community in Kostroma, Russia.

Zip Code List Available - New at the Beth El Office

Looking for a carpool, to just trying to find out what members live nearby? The Beth El office can put together a listing, by zip code and you are welcome to the information. Please call Pam Kocher at the office 301-652-2606 ext. 303 and she will be able to assist you with your request.

Save the Date
Thursday, October 17 at 6:30 pm
Sisterhood Membership Dinner
watch the next Scroll for
information

Sisterhood is no longer handling
Washington Jewish Week
subscription renewals.
Please send your renewal form and
check directly to WJW.

From the Clergy continued

together in large numbers to feel the strength and security we have when together. And in support of Israel, we saw an April Rally and Israel Task Force activities that are the envy of synagogues across the land, and are the absolute right things to be doing at this time of crisis.

Though we are not sure what the next year will bring, we ARE sure that together we are working with you to build the best year and a meaningful future for our community, our nation, and our homeland. We are buoyed by a clear sense that you are with us in these endeavors, even ahead of us oftentimes in your dedication and enthusiasm. For what better partners could we hope?

Our families join with us in wishing you and all of us a year of peace and progress – in our hearts, our homes, our synagogue, and in Eretz Yisrael. L'shanah Tovah Tikatevu. May we all be inscribed in the Book of Life.

Rabbi Bill Rudolph
Rabbi Gregory Harris
Hazzan Abraham Lubin

Great Classes for Fall at Saul Bendit

The Saul Bendit Adult Institute has planned another semester of stimulating education classes, beginning on October 8 and 9 for six straight weeks, ending on November 12 and 13. The tentative scheduled includes all of our clergy presenting new classes: Rabbi Rudolph discussing the events of September 11 from a Jewish perspective; Rabbi Harris with two classes, one on the Jewish life cycle, the other on Midrashim related to Biblical personalities; Hazzan Lubin teaching about the basics of Judaism; and Rabbi Scolnic lecturing on major prophets in the Bible. In addition, we are planning three history classes: the Coetzees with the next course on European Jewry in the Interwar Period; Jeffrey Kaplan about the Jews and the Silk Road; and one on the history of the Israeli-Arab conflict. For those interested in the Arts, the expected courses include Israeli dancing, Israeli literature, depiction of Jews in movies, and Bible and art. Of course, we will have both Cheryl Kreiser and Betsy Roth back to teach Hebrew reading.

As an extra bonus, there will be an exciting Kick-Off program on October 2. So mark your calendars now, and watch for the brochure in the mail.

Nominating and Recruitment Committee

Shortly after the High Holy Days, the Nominating and Recruitment Committee will convene its first meeting to consider candidates for the ten (10) elected officers (President, Executive Vice President, Treasurer, Secretary, and six Vice Presidents with portfolios) and six (6) Trustee positions. If you are interested in being considered as an elected representative of the Congregation either as an Officer or Trustee, please either: (1) call Benson D. Adams, immediate past president, at 301-530-1243, (2) write him care of the Synagogue or at his home (address listed in the Beth El Directory, or (3) e-mail him at NRC@bethelmc.org to let him know of your interest, the position you are seeking and your qualifications/experience. This will allow the Committee in its vetting process to get to "know" you. Our search is not limited only to those who have had prior service with Beth El Auxiliaries, committees, the Board, or as an officer. Nor should your lack of familiarity to members of the Committee or lack of prior experience at Beth El be a deterrent to serving the Congregation. The only prerequisite for consideration is your background, experience, and willingness to serve. We are particularly seeking qualified people of all ages (who have not necessarily served the Congregation or thought about doing so before) to step forward and make their desire known to the Committee to take on a leadership role to serve this vibrant Congregation.

Gifts of Stock

Beth El's old brokerage company has been purchased by Brown and Company. If you plan to make a gift of stock to Beth El, please call the office to obtain the new DTC number and account number.

.....

● **High Holiday Tickets**

● Watch the mail for your High Holiday tickets which

● were mailed in late August. Please remember to bring

● them with you to services, as security and/or ushers

● will ask for them on both Rosh Hashanah and Yom

● Kippur. Thank you for your cooperation.

●

BETH EL SCROLL Congregation Beth El of Montgomery County 8215 Old Georgetown Road Bethesda, Maryland 20814-1451 Phone Number: 301-652-2606 FAX Number 301-907-8559 Web Site www.bethelmc.org	Rabbi William D. Rudolph wrudolph@bethelmc.org Assistant Rabbi Gregory Harris gharris@bethelmc.org Rabbi Emeritus Abraham Lubin alubin@bethelmc.org	Executive Director Sheila H. Bellack sbellack@bethelmc.org Education Director Louis A. Nagel lnagel@bethelmc.org Family Education Director/ Assistant Education Director Sarah L. Roark sroark@bethelmc.org Nursery School Director Johanna M. Sohinki jsohinki@bethelmc.org Youth Director Sheldon Novak snovak@bethelmc.org	President Arthur N. Popper apopper@bethelmc.org Executive Vice President Brent A. Berger bberger@bethelmc.org Religious Vice President Gail Ross gross@bethelmc.org Youth Vice President Bert King bking@bethelmc.org Administration Vice President Judy Sherman jsherman@bethelmc.org	Education Vice President Susan Levine slevine@bethelmc.org Program Vice President Marvin Yudkovitz myudkovitz@bethelmc.org Development and Finance Vice President Cary Feldman cfeldman@bethelmc.org Treasurer Judy C. Futterman jfutterman@bethelmc.org Secretary Jerome V. Danoff jdandoff@bethelmc.org	Publication Chair Helen A. Popper hpopper@bethelmc.org <small>Scroll, USPS Number 009813, is published semi-monthly, except July and August, by Congregation Beth El of Montgomery County, 8215 Old Georgetown Rd., Bethesda, MD 20814. Periodical postage rate paid at Bethesda, Maryland and additional mailing offices. POSTMASTER: Send address changes to Scroll, 8215 Old Georgetown Road, Bethesda, MD 20814.</small>
--	--	---	--	--	--

Our Ambulance Has Reached Israel

The ambulance Beth El donated to Magen David Adom has arrived in Israel and joined the fleet there. In a letter from MDA headquarters in Israel, we have been informed that the vehicle is stationed in Ramat Gan, a city just north of Tel Aviv. If you are in the vicinity, our ambulance can be identified by our dedication on the doors, or by its license plate (number 47-720-50) or its operational number (Dan 50). We hope and pray that it will be ferrying pregnant women to the hospital to deliver babies, rather than victims of terror.

We received the following letter from Magen David Adom in Israel. (Recreated for this issue.)



July 1, 2002

Dear Rabbi Rudolph,

It is our privilege and pleasure to inform you that the standard ambulance so generously donated to Magen David Adom in Israel by Congregation Beth El has arrived safely and joined our fleet.

The life-saving vehicle is now stationed at MDA's station in Ramat Gan.

Its Chassis number is: 78191

Its license plate number is: 47-720-50

Its operational number is Dan 50

Magen David Adom provides Emergency Medical Services to the population of Israel in routine and in emergencies with the operation of Standard Ambulances and Mobile Intensive Care Units that are all acquired thanks to generous contributors.

With your generosity you assist MDA in saving lives and thus perpetuate the saying:

**"HE WHO HAS SAVED ONE LIFE,
HAS SAVED AN ENTIRE WORLD"**

We are most grateful for your support and interest in the humanitarian and life-saving work of Magen David Adom in Israel. Please accept our most sincere thanks for this substantial gift.

Yours truly,

Haim Dagan

Director

Administration and International Department

An Artful Celebration of Israel

Express yourself about Israel in a congregation-wide "contest." Respond to the question: What does Israel mean to me? Write a poem or an essay, make a painting, a drawing, or a sculpture, compose a piece of music, a rap, or a sonata expressing your feeling about Israel. All this will culminate at a special November 1 Shabbat dinner when many of the submissions will be viewed or preformed. Submission deadline is October 14. Contact Louis Nagel or Rabbi Harris for more information.

Roses from Israel

With the aim of supporting the Israeli economy, Sisterhood has ordered Israeli roses for the Bimah on several Shabbatot this summer. The roses are shipped to us directly from the grower in Moshav Sde Nitzan (in the Northern Negev). The roses beautify our sanctuary and are also a symbol of our solidarity with Israel in these difficult times. Sisterhood wishes to express its thanks to the congregants who have purchased the roses, and also to Tamar Fishman and Esther Wilner for ordering and arranging the roses. If you would like to order these reasonably priced roses for your own home you can do so at www.mnmrose.com or call Esther Wilner at 301-320-2478 for more information.



Tamar Fishman with Bimah flowers from Israel

L'Shana Tova L'Yisrael – May It Be A Good Year for Israel

During the High Holy days you can make a difference for Israel by investing in Israel Bonds. Providing over \$25 billion in investment capital over the past 54 years, Israel Bonds has made a major impact on Israel's development when help was needed the most. As Israel faces war and recession, help is needed again. Israel Bonds investment dollars provide the ammunition to tackle Israel's most pressing problems: the water shortage crisis; overcrowding; transportation limitations; and immigrant absorption, among them. You can play a critical role in supporting Israel in her time of need by purchasing bonds at our synagogue's High Holy Day Israel Bond Appeal this year.

Mazal Tov Update

Several names were inadvertently omitted from the list of CES/JDS lower school graduates that was included in the last issue of the Scroll. The complete list of graduates, to whom we wish much success, is: Benjamin Berman, Ron Birnkrant, Eli Eisenstadt, Meryl Feinstein, Joel Finbloom, David Fink, Samuel Futterman, Ilana Greene, Joshua Kaplan, Joshua Prada, Stephen Pupkin, and Nathaniel Rosen.

President's Message

by Arthur Popper and Bert King

As you might imagine, things have slowed down at Beth El over the summer as congregants, staff, and clergy take vacation and spend time with families. Still, a number of things have happened over the summer, and we hope that in the coming weeks congregants will see an acceleration of events moving us towards our Atid.

We continue to work diligently on the construction project. In mid-July we received revised schematic plans from our architect, Jay Brown. (For those of you who do not remember, Jay Brown is a principal in the firm of Levin/Brown, one of the leading synagogue architects in the United States.) Shortly thereafter, representatives from the schools, Sisterhood, Men's Club, and other groups most impacted by changes in the building spent hours going over the plans and "tweaking" them to ensure that the building is most effective. A small group of us then met in late July with Jay to convey the revisions and hear a number of his ideas in response to our suggestions.

We also asked Jay to see if he can find ways to enlarge the new entry so it can be more of a place where people can comfortably "hang out" while they wait to pick up their children or when they just want to schmooze with friends. We also discussed the request of many members to retain an atrium in the building. While it appears this is not possible without very major sacrifice of much needed meeting and classroom space, the architect is going to try and develop plans whereby we have views of the outdoors or a small garden from the new chapel and perhaps the new library.

At services this past Shabbat, one member pointed out that in the last issue of the *Scroll*, we mentioned that we will have many new and exciting spaces but that we did not mention rest rooms. Clearly, rest rooms, and particularly the number and size of the stalls in the ladies room, have been a hot topic over the past few years. Let me ensure everyone that the construction will include new, more, and larger rest rooms that will be fully accessible. We will also have a cloak area that is larger than our current space.

As we write this (early August), we are awaiting revised schematic (next-to-final) plans from the architect. After these have again been gone over by a diverse group of constituencies, we will give additional feedback to the architect. His next step would be to create plans and building views for distribution to the entire congregation. Indeed, it is our fervent hope that by the time you read this article, these new plans will be posted for viewing at Beth El.

The two of us are very excited about the new construction, and we think that our excitement is shared by your leadership, the clergy, our staff, and all members who have helped us work towards finalizing the project. Of course, we still need to have additional funds for the project (particularly in light of our need to purchase a house

to improve our entranceway) and so if you have not made a donation yet or are in a position to increase your donation (which can be extended out over multiple years), it is *imperative* that you contact Andrea Glazer, our fundraising consultant, at 301-652-2606, ext. 313.

We also want to bring you up-to-date on access to the Bimah. We have been exploring a number of options with regard to a lift and recently found a way in which we can use the lift with minimal or no changes to the Bimah structure itself. We will shortly order the lift and hope to have it installed as soon as it arrives. The lift will be portable so that we can move it out of the way when it is not needed. We also have asked our architect to work out a way to ensure Bimah access from the side or rear of the Bimah (using the new lift) as part of the construction process.

We will also change the handrails to the Bimah to make them really functional so that people who need some support as they climb the Bimah steps will actually be able to get the support from the handrails. This may take a bit of time, however, since we need to have our architect come up with plans so that the handrails will fit into the Bimah effectively and also look good.

We would like to end by extending a L'Shana Tova to you and your families from ourselves and our families. We hope that the holidays are wonderful for each of you, and that the new year is one of only good for each of us, for Congregation Beth El, and for the United States, Israel, and the world.

Lulav and Etrog Order Form 2002

This year we are again purchasing our lulavim and etrogim from New York directly, thus saving everyone money - almost 20%. To do this, however, all orders must be placed and paid for by September 9. Please note that these are the same prices as last year.

I would like to order the following lulav and etrog set:

___ Small \$38 ___ Large \$47 ___ Deluxe \$57

Name _____

Phone _____

Make your check payable to Congregation Beth El and send it with this form to the office. No orders will be accepted after September 9. Orders can be picked up on Wednesday and Thursday, September 18 and 19, from 9 a.m. to 5 p.m. or Friday, September 20, from 9 a.m. to 2:30 p.m. All orders must be prepaid.

Minutes from the Annual Congregation Meeting

Tuesday, May 28, 2002, Abridged Minutes
(unapproved pending next Congregation meeting)

Arthur Popper - presiding, **Jerome Danoff** - recording
Called to order 8:27 pm

1. D'var Torah by **Rabbi Bill Rudolph**

Reference was made to leadership and the personality of Moses, who was challenged three times. During the past year our congregation leadership has been challenged at least three times, and we should be able to better understand the emotions and responses of Moses. Now we are working, as did Moses, to spread and share our leadership. Our spirit has been revived. Priorities are being directed to synagogue activities and Tzedakah. G-d should bless this synagogue with peace.

2. Minutes from previous Congregation meeting had been mailed out. Additional copies were distributed as needed. Minutes were approved.

3. President's Report, **Arthur Popper**

Beth El today is not the same place it was eight months ago. Beth El is undergoing a renaissance, and there is a feeling of vibrancy and excitement - beginning with the selection of Bill Rudolph as Rabbi, culminating in the recent hiring of Gregory Harris as Assistant Rabbi and including the Purim celebration, the Rabbi's Installation, the ambulance purchased for Israel, the million dollar fundraiser for Israel, the award-winning Youth Program and Religious School, Sisterhood Shabbat and other programs, Saul Bendit Institute, the Nursery School, the Men's Club Dinner/Dance, Family Education programs, etc. Thanks were extended to Executive Vice President Brent Berger, the rest of the Executive Committee, the Board, the staff, and many others [full text of President's report published in previous Scroll].

4. Nominating and Recruitment Committee Report, **Benson Adams**

Membership consisted of representatives from the five auxiliaries and six standing trustees. Nominees are Jody Bleiberg, Barbara Klein, David Schultz, Joel Simon, Esther Wilner, and Colin Winston. A motion was made and seconded to appoint these people as trustees. Motion was carried with 95 votes aye, 0 nay, and 1 abstention.

5. Budget Report, **Judy Futterman**

Other members of the Budget Committee were Gary Rosenfeld (chair), Shelly London, Dave Levine, Deborah Reiser, Steven Cohen, Stephanie Ventura, and Cheryl Rod. Staff support was provided by Sheila Bellack.

The budget has been planned with the intention of avoiding any cut-back in programming. The biggest item in the budget is still salary for all staff. There will be additional expenses this year for repairs and security. However, we do have substantial reserve funding in the bank, and all bills are being paid on time.

This year, the 3rd High Holiday service will be held at Whitman (no hotel expense, no additional clergy) which will save some expenses. The Religious School finances will be "flat." The building mortgage (\$107,000) will be paid off by December. The dues this year will be raised an average of 4.5%. Because the fiscal year has been shifted one month, the total appears larger, but this amounts to only \$7 more per month (but with one more month included in this year's total).

Congregants are encouraged to purchase Shopping Certificates/Gift Cards which raised \$11,000 last year. This year we would like to make \$20,000 on Shopping Certificates. Fund raising goals for this year will be \$74,000 including one major event. Donations are encouraged to the General Fund, which raised \$22,000 this year (also the goal for next year). We will also attempt to increase Ner Tamid subscriptions.

Questions and Discussion followed: There was a question on whether the Building Fund charge should be applied to new members. There was discussion on alternative ways of grouping Young Adults.

A motion was made and seconded to accept the budget. An amendment was made to allow for future consideration of the dues structure for individuals under the age of 35 years. The amended motion was passed.

6. Sisterhood, **Pat Danoff**

A check was presented to the congregation for \$25,000. An additional special donation of \$36,000 will be presented in four installments. Thanks were conveyed to the catering committee and the gift shop for contributing so much to the generation of these funds.

7. Nursery School, **Dorene Rosenthal**

A check was presented to the congregation for \$27,500.

8. ATID Report, **Rob Fersh, Suzanne Bronheim** (Mark Levitt was absent)

Rob: Many people have been involved in ATID and their contributions are appreciated. The process included gathering of data via interviews followed by a series of parlor sessions. A preliminary report is being prepared for distribution. There will be an ATID work session with the Board on June 11 and a session with the full congregation on October 20. Three target areas have been identified (1) community, (2) education/life-long learning, (3) spirituality, and two driving "engines" (1) leadership development and (2) communication.

Suzanne: This should not be seen as a quick fix. ATID represents what we want to become in five years.

9. Capital Campaign, **Bert King**

Andrea Glazer has been rehired to monitor and direct fundraising. There have been meetings with the bank and with the architect. The contractor has prepared a revised plan and sketches by the architect will be prepared and distributed by summer.

Northern properties (3 houses on Old Georgetown Road): We have so far been unable to negotiate an acceptable price. The \$625,000/house group listing has been withdrawn. We will restart negotiations with the individual owners. We have engaged a professional engineer for site analysis, and we have hired legal council.

10. Hazzan Report, **Abe Lubin**

After 12 years, Hazzan Lubin is still "bullish" on Beth El. Congratulations to Rabbi Rudolph on becoming a grandfather. Beth El is now favorably well-known from coast to coast because of the Israel Rally. There will be a new Children's Choir forming for the coming year. There will be a major professional concert planned to take place in Spring 2003 for fun and funds – probably 2 Sundays after Pesach (around May 4).

Meeting adjourned 10:01 pm.

Beth El Senior Singles

The first meeting of the new season for the Beth El Senior Singles (formerly called Beth El 50+ Singles) will be held Thursday, September 19 in the All-Purpose room at Beth El, at 7:30 p.m. Dr. Herbert Wisner, Beth El member and noted physicist will speak on "The Birth of the Atomic Age." All senior singles are welcome. For more information, contact Evelyn Bitterbaum at 301-530-3464, or Roy Millenson at 301-229-4237.

Please join us for

Roundtable

with the

Rabbi



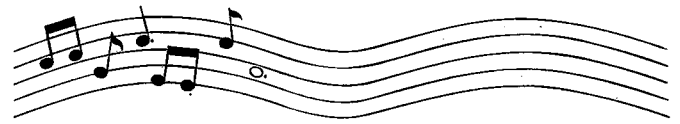
Wednesday, September 4, 2002

2 p.m.

Board Room

Come help us celebrate the September birthdays. We will have Dessert and coffee with a roundtable discussion led by Rabbi Rudolph

If you have questions, need transportation, or plan to attend, please call Rabbi Rudolph at 301-652-8573 ext 318

Shiru Ladonai
Shir Hadash

Sing Unto God a New Song

Friday, August 30, 2002
6:30 pm

Join Hazzan Lubin and the Ahavat Shir Choir in the performance of a new participatory Friday Night Service by Hazzan Sol Zim. Accompanied at the piano by our own Bob Litman, we will learn new melodies and share in the spirit of Shabbat.

Come and bring your friends to this joyous Shabbat celebration.

Vatikkim Luncheon

Our luncheon on Thursday, September 19, 2002, will feature **Dr. Thomas Hoffman**, a member of our congregation, as speaker. A practicing psychoanalyst, he is affiliated with the Baltimore-Washington Institute for Psychoanalysis. At a presentation to the Beth El Men's Club last year, he engaged the audience in a far-ranging discussion of "Psychoanalysis, Judaism and Dream Interpretation." We are delighted to welcome Dr. Hoffman to the Vatikkim, so we can learn about psychoanalysis and its relationship to Jewish philosophy.

Everyone is welcome! Lunch is at Noon, and the program starts at 1 pm. Cost for members is \$7. Non-member cost is \$8. Please fill out the reservation form below and mail it to Bea Goldman, 3214 Henderson Avenue, Silver Spring, MD 20902; 301-942-9434, or to Phyllis Blum, 1411 Stratton Drive, Rockville, MD 20854; 301-340-3046.

Reservation Form

Vatikkim Luncheon on Thursday, September 19, 2002
Please reserve _____ places for me at the Vatikkim luncheon.

Name: _____
Phone Number: _____

Please have your response reach us by Tuesday, September 17. No reservations will be accepted after this date.

New Members

The Beth El community extends its warm welcome to the following members who have recently joined or rejoined the synagogue. If one or more of these families live in your neighborhood, please reach out and personally welcome them. We encourage the new members to take advantage of the wonderful activities Beth El has to offer and hope you will let us know if you have questions or concerns that we can help to address.

Ruth Bloom , 6401 Tilden Lane, Rockville, MD 20852	301-881-4441
Steven Goldberg and Virginia Maycock , 8018 Aberdeen Road, Bethesda, MD 208147 Max Goldberg, Stuart Goldberg	240-350-4705
Milton and Libbie Gussow , 6609 Lybrook Court, Bethesda, MD 20817	301-365-2579
Bennett and Marlene Harte , 11400 Strand Drive, Apt 14, Rockville, MD 20852	301-230-7501
Gregory and Lucy Portnoy , 8204 W. Gainsborough Court, Potomac, MD 20854 Dimitry Portnoy, Joshua Portnoy	301-365-2168
D. Daniel Sokol , 1747 Church Street, Unit 2, Washington, DC 20036	202-483-3277
Ariel Sokol , 1747 Church Street, Unit 2, Washington, DC 20036	202-483-3277
Jonathan and Joyce Stone , 5605 McLean Drive, Bethesda, MD 20814 Elizabeth Stone, Margaret Stone	301-657-1765
Suzanne Stone , 8806 Lowell Place, Bethesda, MD 20817 Adam Kramer, Miriam Kramer	301-365-3253

Evening Minyan

The following people are asked to help us with our daily Evening Minyan for the next three weeks. On Sunday through Thursday, the Minyan begins at 8 p.m. and concludes at 8:15 p.m. During the week of your assignment, we would appreciate your attending as many evenings as possible so that those who are saying Kaddish will have a Minyan they can attend at Beth El.

September 1 – September 5

Elliot Feldman and Lily Gardner Feldman
Lloyd and Ninetta Feldman
Shirley Feldman
Robert Fersh and Sharon Markus
Joni Field
Thera Finbloom
Leesa Fine
Michael and Deborah Fink
Bernice Finkelstein
Ira and Sheryl Fishman
Michael and Irene Fishman
Samuel and Tamar Fishman
Rosalyn Fleisher
Lawrence Fluger and Linda Fassberg
Richard and Marla Footer
Herbert and Marilyn Forrest
Samuel Forstein and Faye Ehrenstamm
Murray and Anne Foss
Albert and Evelyn Fox
Daniel and Elaine Fox

September 8 – September 12

Russell Fox and Andrea Shandell
Beryl and Gloria Frank
Steven and Regina Frank
Henry Freedman
Stanley Freeman
Karl Freiberg
Steven and Sheryl Freishtat
Kenneth and Stephanie Fried
Helen Friedkin
Barry and Barbara Friedman
Bernard and Paula Friedman
Gerald and Sandra Friedman
Jerry and Laurie Friedman
Michael and Barbara Friedman
Moshe and Sarah Friedman
Philip and Beverly Friedman
Peter and Debra Friedmann
Samuel and Eleanor Frishman
Erica Frohman

September 15 – September 19

Craig and Judy Futterman
Jerome and Mona Gabry
Mordechai and Joan Galil
Patrick and Tracey Gallagher
Jeffrey and Lynne Ganek
Florence Gang
Jonathan and Jane Gang
Jerrold and Sally Ganzfried
Michael Garel
Hy Garfinkel
Borys and Dora Gendelman
Gertrude Gerber
Sylvan and Esther Gerber
Edward and Jill Gerstenfield
Daniel A. Geselowitz and Sandra I. Cohen
Sidney Getz and Janet Lewis Getz
Mark and SuzAnne Gladstone
Suzanne Glaser
David and Ariel Glassman
Harry and Carol Glazer

All in the Family

Mazal Tov to **Judith Newman** on the birth of her second great-grandson, **Gabriel Ethan Adler**, son of **Beth and Michael Adler**, grandson of **Marc and Phyllis Newman**.

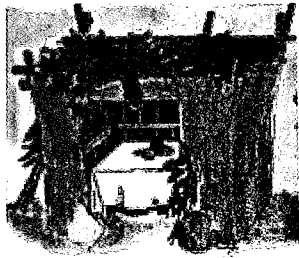
Mazal Tov to **Fran Watson and Robert Watson** on the birth of their daughter, **Mattie Jean Watson**, born June 20, 2002.

Mazal Tov to **Caren and Michael Ravitch** on the birth of their son, **Jake Philip Ravitch**, born June 12, 2002.

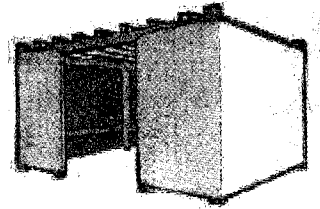
Baruch Dayan Emet

Congregation Beth El offers its sincere condolences to **Jana Singer and Michael and Joshua Prada** on the sudden death of **Vincent Prada**, their husband and father respectively; to **Ken Levine** on the death of his father, **Meyer Levine**; to **Rosine Nussenblatt** on the death of her mother, **Rachel Rossignelly**; to **Martha Zaslow** on the death of her father, **Edmund Zaslow**; to **Robin Jacobson** on the death of her father, **Warren Jacobson**; and to **Jeffrey Katz** on the death of his father, **Rudy Katz**.

SUKKAH BUILDING KITS



OR DO-IT-YOURSELF INSTRUCTIONS



**SPONSORED BY BETH EL YOUTH COMMITTEE,
MEN'S CLUB AND BOY SCOUTS**

ORDER EARLY THIS YEAR!

Sukkot begins this year on **Friday evening, September 20**. For the fifteenth year, Congregation Beth EI is offering an easy to assemble, moderately priced Sukkah kit to enhance your enjoyment of the holiday.

The complete kit will produce a free-standing 8' x 8' x 8' square frame Sukkah made of 122 spruce or pine. All necessary holes are pre-drilled and hardware (bolts, wing nuts, corner braces) and directions for assembly are included. Tools required are pliers, wrench or nutdriver. You will need to provide your own siding (such as sheets, shades or plastic), roofing branches and decorations. A 4' x 8' extension kit is available for \$60.00 to enlarge the sukkah to 8' x 12'. Pictures of the Sukkah can be seen on the Beth EI bulletin board.

THE COST OF EACH COMPLETE KIT IS \$115 (which covers the cost of materials and a contribution to the synagogue). A limited number of kits are made during the summer and will be sold to the first people from whom we receive payment. **MAIL IN YOUR ORDER SOON TO AVOID DISAPPOINTMENT SINCE WE ARE EXPECTING THE KITS TO SELL OUT AGAIN THIS YEAR.**

Call Jon Binder at 301-365-3806 for further information. Kits can be picked up at Beth EI on September 15, 2002, from 9 a.m. to 1 p.m. (Be prepared to carry home several pieces of 8' lumber).

For Do-It-Yourselfers:

An instruction packet including directions for purchasing the materials and completely making the Sukkah or extension yourself is also available. We have plenty of copies and will mail them anywhere you wish.

THE DO-IT-YOURSELF INSTRUCTIONS COST \$10 and include an exact shopping list of lumber and hardware needed, plus directions for how to cut the wood, drill the holes and assemble the Sukkah.

Please complete the order form below and send it with your check made payable to "Congregation Beth EI" to **Jon Binder, 6601 Marywood Road, Bethesda, MD 20817**. Please write Sukkah kit or Sukkah instructions on the check.

Sukkah Order Form

I would like to order ___ complete Sukkah kits at \$115 each. (Instructions included.) Kits can be picked up on September 15 at Beth EI.

I would like to order ___ do-it-yourself Sukkah instructions at \$10 each. Packets will be mailed upon receipt of your order.

I would like to order ___ extension kits at \$60.00 each

A check for \$ _____ is enclosed (made out to Congregation Beth EI).

Name: _____

Address: _____

City: _____ State: _____ Zip: _____

Phone: _____ E-mail: _____