



CONGREGATION BETH EL OF MONTGOMERY COUNTY

THE RABBI SAMUEL SCOLNIC ADULT INSTITUTE

FOUNDED IN 1977 IN MEMORY OF SAUL BENDIT

Fall 2016

"FIX A PERIOD FOR THE STUDY OF TORAH"
PIRKEI AVOT 1: 15

REGISTER ONLINE!!
Register NOW for the Early Bird Discount.
Deadline: October 21

SIX TUESDAY MORNINGS
November 1, 8, 15, and 29; December 6 and 13

SIX WEDNESDAY EVENINGS
November 2, 9, 16, and 30; and December 7 and 14

NO CLASSES NOVEMBER 22 AND 23

*All classes are open to the public.
There is no prerequisite—only a desire to participate, learn, and enjoy.*

THE RABBI SAMUEL SCOLNIC ADULT INSTITUTE, founded in 1977 in memory of Saul Bendit, is one of the leading synagogue-based adult education programs in the Washington, DC area. Now in its 39th year, the Institute has received national and international recognition. The Fall program, running for six weeks, comprises 11 courses offered Wednesday evenings beginning November 2, and four classes offered Tuesday mornings, beginning November 1. We are confident that you will find the courses interesting and informative.

SCHEDULE OF CLASSES

WEDNESDAY NIGHT SCHEDULE

WITH MINYAN/REFRESHMENT BREAK FROM 8:20-8:40 PM

7:30 - 8:20 PM

8:40 - 9:30 PM

**Jewish Customs and Ceremonies:
The Uncommon and the Weird**

Rabbi Fabián Werbin

**Innovative Jewish Thinkers:
Theodore Herzl**

Rabbi Gregory Harris

**Israel: Why It Is Called the 'Start-Up
Nation' and Why Is That Important?**

Rabbi Emeritus William D. Rudolph

Exploring Prayer and Our New Siddur

Hazzan Matthew Klein

**The Great Hazzanim of the 20th
Century and Their Music**

Hazzan Emeritus Abraham Lubin

**The *Book of Judges*: Transitional
Leadership Between Joshua and
Samuel**

Rabbi Mindy Avra Portnoy

**Holiday Observances: Interaction of
Jewish and Surrounding Cultures**

Rabbi Avis Miller

Jewish Sexual Ethics

Rabbi Steven Glazer

Am I Jewish?

Rabbi Evan Krame

Jewish Scientists

Dr. David H. Margulies

**Uncovering the Ancient Roots of
Jewish Morocco**

Rabbi Mark H. Levine

TUESDAY MORNING SCHEDULE

WITH REFRESHMENT BREAK FROM 10:50-11:10 AM

10:00 - 10:50 AM

11:10 AM - NOON

**Uncovering the Ancient Roots of
Jewish Morocco**

Rabbi Mark H. Levine

**The *Book of Judges*: Transitional
Leadership Between Joshua and
Samuel**

Rabbi Mindy Avra Portnoy

**Holiday Observances: Interaction of
Jewish and Surrounding Cultures**

Rabbi Avis Miller

Jewish Sexual Ethics

Rabbi Steven Glazer

CLASS DESCRIPTIONS

JEWISH CUSTOMS AND CEREMONIES: THE UNCOMMON AND THE WEIRD

Instructor: **Rabbi Fabián Werbin**, Wednesday evening

Our tradition has festivals, customs and ceremonies that are well known and accepted by all. But there are other rituals that are less known, strange and even controversial. Explore what ceremony happens once in 28 years, why the Jews poured water on the altar, why the moon receives a special blessing, when it is appropriate to bless the children, and more. You may want to adopt some new customs and make them part of your own tradition.



Kissing the mezuzah,
OU.org

ISRAEL: WHY IT IS CALLED THE 'START-UP NATION' AND WHY IS THAT IMPORTANT?

Instructors: **Rabbi Emeritus William Rudolph and Guests**, Wednesday evening



timesofisrael.com

How is it that tiny Israel, surrounded by enemies, with no natural resources, produces more start-up companies *per capita* than any other country in the world? This course will examine how Israel's state of mind, R & D, government venture capital funds, and military service, combine to produce amazing technology and economic growth. We will consider what individuals and other nations can learn from this. We will also explore the involvement of the Arab population in the high tech revolution.

THE GREAT HAZZANIM OF THE 20TH CENTURY AND THEIR MUSIC

Instructor: **Hazzan Emeritus Abraham Lubin**, Wednesday evening

This course will explore, analyze, and illustrate the magnificent genre of East European *Hazzanut* and the great *Hazzanim* of the 20th century who performed and recorded these masterpieces. The *Hazzanim* to be discussed include Yossele Rosenblatt, Pierre Pinchik, Zavel Kwartin, and Leib Glantz. Rare film footage of the thirties, live audio files, and CDs will be used for illustration in the class.



Yossele Rosenblatt,
Wikimedia Commons

HOLIDAY OBSERVANCES: INTERACTION OF JEWISH AND SURROUNDING CULTURES

Instructor: **Rabbi Avis Miller**, Tuesday morning and Wednesday evening



"Hanukkah Bush" on the tv show *The Goldbergs*, courtesy of ABC

The course will examine six secular and religious holiday celebrations which take place during the fall and winter in America: *Sukkot*, Halloween, Thanksgiving, *Hanukkah*, Christmas, and New Year's. How and why do Jews celebrate these holidays (or not)? In what ways do Jewish traditions intersect with and interact with the surrounding non-Jewish culture? We will raise provocative questions, such as: Why is *Sukkot* the most universal of all Jewish holidays? Do Jews believe in ghosts, and should we celebrate Halloween? Does Thanksgiving have Biblical roots? What Jewish themes are in the Christmas story? In addressing these queries, we will study religious texts, such as the *Torah* (for *Sukkot*), the *Mishnah* (for New Year's), and the Gospels (for Christmas), along with other sources.

AM I JEWISH?

Instructor: **Rabbi Evan Krame**, Wednesday evening

This course will be a historical and *halakhic* analysis of what it means to be Jewish. We will start with Biblical stories from the *Tanach* about identity, explore what it means to be part of a religious group, use the identity of King Herod as a case study, examine the *Talmud* on becoming a Jew, and review the history of Jewish identity through the lens of an oppressed people. We will also discuss the history of patrilineal descent and matrilineal descent, examining texts from *Torah*, *Ezra*, *Apocrypha*, and *Talmud*.



UNCOVERING THE ANCIENT ROOTS OF JEWISH MOROCCO

Instructor: **Rabbi Mark Levine**, Tuesday morning and Wednesday evening

Once the largest Jewish community in the Muslim world and the home of Maimonides in the twelfth century, the medina of Fes continues to be regarded as one of the most extensive and best conserved historical areas in all of the Arab-Muslim world. The Jewish connection to Morocco, according to some scholars, might have originated at the time of the destruction of the First Temple (587 BCE). Without doubt, however, Jewish ties to this culturally diverse and starkly beautiful country can be traced to the first century of the Common Era. Join us as we explore the vibrant history of the Jewish community in Morocco, and get acquainted with some of the artists, *tzadikim*, merchants, and rogues who once lived there.



Ibn Danan Synagogue in Fes, Morocco, Wikimedia Commons

INNOVATIVE JEWISH THINKERS: THEODOR HERZL

Instructor: **Rabbi Gregory Harris**, Wednesday evening

Although Theodor Herzl is considered the father of modern Zionism, he never lived to see the establishment of Israel. We will explore the life and times of Herzl. This encompasses the rise of modern nationalism across Europe, the effects of anti-Semitism on shaping his vision, and the challenges this Viennese journalist faced from world leaders and within the Jewish community itself. With numerous political and religious pushes and pulls, Herzl dedicated the last decade of his life to establishing a Jewish Homeland.



Theodor Herzl,
Wikimedia Commons

EXPLORING PRAYER AND OUR NEW *SIDDUR*

Instructor: **Hazzan Matthew Klein**, Wednesday evening



This year, Beth El has adopted the Conservative Movement's groundbreaking new prayerbook, *Siddur Lev Shalem*. This prayerbook is more than just words – it includes essays, poetry, beautiful English, alternative rituals, and new ways to personalize the prayer experience and build a relationship with God. This class will explore our new *siddur*, and help the student appreciate and consider its innovations, message, and theology. Come to deepen your own prayer life, and to make a friend of this new resource in the spiritual journey of Conservative Judaism.

THE BOOK OF JUDGES: TRANSITIONAL LEADERSHIP BETWEEN JOSHUA AND SAMUEL

Instructor: **Rabbi Mindy Avra Portnoy**, Tuesday morning and Wednesday evening

The Biblical Book of *Judges* tells us how the Israelites conquered Canaan. This book occupies a unique niche in the history of leadership in Israel, nestled between the death of Joshua and the birth of Samuel. It is usually considered to be a more realistic story of the conquest of Canaan than we find in the *Book of Joshua*. The pre-monarchical tribes of Israel lacked political cohesion and a strong central government. The "judges," more charismatic military chieftains than adjudicators, include such fascinating characters as Gideon, Jephthah, Samson, and Deborah. This class will cover the 21 chapters of the *Book of Judges*, which ends with the words, "In those days there was no king in Israel; everyone did as he pleased." It would be helpful, in preparation for the first class, to read the first 3 chapters of the *Book of Judges*.



Joshua and Samuel, Johann Georg Schreiner, 1840, Wikimedia Commons

JEWISH SEXUAL ETHICS

Instructor: **Rabbi Steven Glazer**, Tuesday morning and Wednesday evening



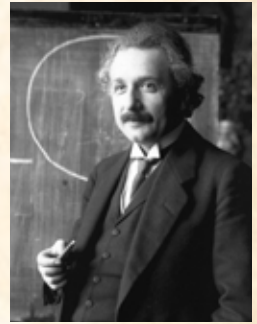
Wikimedia Commons

This course surveys the views of a broad range of *halakhists* on sexuality, including such topics as human sexuality, sexual activity by unmarried people, monogamy in marriage, and the “new” Jewish family. In addition, LGBTQ (Lesbian, Gay, Bisexual, Transgender, Queer)-related issues will be examined. *NOTE: This class will not meet Tuesday morning, November 8. The class will meet for an extra 10 minutes (11:10 AM – 12:10 PM) for all other Tuesday sessions. This schedule change does not affect Wednesday evening classes. Tuesday morning registrants may attend another class of their choosing on November 8.*

JEWISH SCIENTISTS

Instructor: **Dr. David H. Margulies**, Wednesday evening

A highly quoted statistic notes that a surprisingly large percentage of Nobel prize winners and influential scientists arise from Jewish roots. This course aims to investigate whether Jewish religion, heritage, culture, and philosophy contribute to a scientific view of the world and to excellence in science. We shall consider whether there is such a thing as “Jewish science.” The class will examine the heritage, biographies and scientific accomplishments of selected scientists and mathematicians from ancient times to the present. As a class we will explore the forces that contribute to scientific discovery and how different cultural backgrounds influence scientific excellence.



Albert Einstein, photo by F. Schmutzer, 1920, Wikimedia Commons

EARLY ALERT FOR SPRING 2017

Spring semester dates are Tuesday/Wednesday, February 28 and March 1 through April 4 and 5, 2017.

If you need assistance or special accommodations in order to participate in the Adult Institute, please call 301-652-2606, ext. 349. A member of the Institute Committee will contact you. Designated parking spaces are available for persons with disabilities. Wheelchairs are available at the entrance to Beth El.



INSTRUCTORS



RABBI STEVEN GLAZER was a pulpit rabbi for 43 years and is currently Rabbi Emeritus of Congregation Beth Emeth, Herndon, VA. He was ordained at the Jewish Theological Seminary (JTS) and has degrees from Columbia University, JTS, and Hebrew Union College. He is principal at Glazer Consulting, which offers consulting services for seniors, their families and caregivers. Rabbi Glazer currently serves on the Ethics Committee of Inova Fairfax Hospital and the faculty of The Uniformed Services University School of Medicine. A member of Beth El, he has taught at The George Washington, George Mason, and Baltimore Hebrew Universities, the Smithsonian Institution, and our Adult Institute.



RABBI GREGORY HARRIS, Head Rabbi of Beth El, joined the Beth El community in 2002. He was ordained at the Jewish Theological Seminary, where he received a Master's Degree in Jewish Education. Rabbi Harris received his B.A. in Political Science from The American University. He is a Past President of the Washington Board of Rabbis and teaches throughout the community. Rabbi Harris has been a Schusterman Rabbinic PEER Fellow and a Washington Partnership Fellow. He has taught in our Adult Institute since joining Beth El. Rabbi Harris was the 2015 recipient of the Matthew Simon Rabbinic Award given by the Jewish Federation for leadership in the broader Jewish community.



HAZZAN MATTHEW KLEIN is the Cantor of Congregation Beth El. Hazzan Klein was invested at the Jewish Theological Seminary, where he also received a Master's Degree in Sacred Music and concentrated in Pastoral Care & Counseling. He received his B.A. in Music *summa cum laude* from the College of William & Mary in Virginia. He completed a term as the cantorial representative to the Committee on Jewish Law and Standards and currently serves on the Cantors Assembly's Executive Council. Hazzan Klein has lectured for several area universities and for rabbinical and cantorial schools across the denominational spectrum. He has taught in our Adult Institute since joining Beth El in 2011.



RABBI EVAN KRAME, currently serving as an Adjunct Rabbi at Beth El, was ordained by the *ALEPH* rabbinic program in January, 2015. He has also completed training as a spiritual advisor through the *ALEPH Hashpa'ah* program, developing skills in spiritual direction and engaging adults and seniors. Rabbi Krame, a member of Beth El, has been a service leader and educator throughout the Maryland Jewish community and he has taught in our Adult Institute. His first and continuing career is as an estates and trusts lawyer. He is a graduate of the National Law Center at The George Washington University and holds a Master's Degree in taxation.

CONTINUED ON NEXT PAGE



RABBI MARK LEVINE is the Education Director at Beth El. He received rabbinic ordination from the Reconstructionist Rabbinical College in 1984 and a M.Ed. in Curriculum Theory in 1983 from Temple University. Rabbi Levine's connection to Moroccan Jewry dates back to his work as a post-graduate student in Ma'alot, a development town in the Galil that was settled primarily by Moroccan *olim*. Moroccan Jewish history became a passion after he visited the country. Rabbi Levine served the Jewish community of Greater Washington as an educational consultant at the Board of Jewish Education from 1984-1997; worked as the founding editor for *BabagaNewz* magazine from 1997-2008; and was Executive Editor of Behrman House Publishing from 2009-2013.



HAZZAN ABRAHAM LUBIN, the Hazzan Emeritus of Beth El, continues to be active in the wider Jewish community. He has officiated at High Holiday and other services for the past five years in Washington DC, Cincinnati, and Annapolis. He is Secretary of the Cantors Assembly Foundation and a past president of the Cantors Assembly. Hazzan Lubin was awarded an honorary Doctor of Music degree by the Jewish Theological Seminary of America. He holds a "hazzan" degree from Jews' College, London, and a Master of Music degree from DePaul University. He lectures on Jewish music, and has performed in the U.S., Canada, Israel, Spain, Argentina, and the former Soviet Union. Hazzan Lubin served as editor of *The Journal of Synagogue Music* for ten years. He has taught in our Adult Institute for many years.



DR. DAVID H. MARGULIES is an NIH research scientist. He has been a member of Congregation Beth El for more than thirty years, served on the Board and is a past president of the Men's Club. He regularly participates in the Shabbat morning *Parsha* study group and has traditionally given the final talk at the *Tikkun Leyl Shavuot*. His laboratory at NIH studies the molecular and cellular basis of the immune response, and he has published and lectured extensively on these topics. He earned his AB from Columbia in Analytical Biology and holds MD and PhD degrees from the Albert Einstein College of Medicine of Yeshiva University. His knowledge of Jewish texts derives from a lifelong personal interest.



RABBI AVIS MILLER is President of the Open *Dor* Foundation, Inc., which reaches out to unaffiliated and marginally active Jews. She is also Rabbi Emerita at Adas Israel Congregation, Washington, DC, where she had the longest pulpit tenure of any woman in the Conservative movement. Past president of the regional Rabbinical Assembly (RA), she has twice chaired the national RA Committee on Outreach and Conversion. Rabbi Miller conducts High Holiday

services at 6th and I Historic Synagogue in Washington, DC, and also teaches classes elsewhere in the area as well as in our Adult Institute. In July 2010, the *Forward* named Rabbi Miller on its initial list of the most influential women rabbis in the United States.



RABBI MINDY AVRA PORTNOY, currently serving as an Adjunct Rabbi at Beth El, has been a Rabbi with Temple Sinai for 25 years and is now Rabbi Emerita. She previously was Director of the B'nai B'rith Hillel Foundation at The American University, and an originator and former national co-coordinator of the Women's Rabbinic Network. Rabbi Portnoy, a graduate of Yale University, was ordained in June 1980 by the Hebrew Union College-Jewish Institute

of Religion in New York City where she also received an MA in Hebrew literature. She was among the pioneers for women in the rabbinate. Among her various publications are five children's books, including *Ima on the Bima: My Mommy is a Rabbi*. She has taught at The American University, in our Adult Institute, in Beth El Sisterhood's *Rosh Chodesh* program, and at other local venues.



RABBI WILLIAM RUDOLPH is Rabbi Emeritus of Beth El since 2015, after 32 years of service. He has taught in the Adult Institute since 1983. In his semi-retirement, additional duties include rabbinic leadership for the Fauquier Jewish Congregation, a creative role in the community's new Ramah Day Camp, and serving as President of the Board of the new Jewish Millennial Engagement Project. Rabbi Rudolph received the Matthew Simon Rabbinic

Leadership Award from the United Jewish Communities, an honorary Doctor of Divinity Degree from the Jewish Theological Seminary, and the Jewish Federation of Greater Washington's "Campaigner of the Year" award.



RABBI FABIÁN WERBIN joined Beth El as Associate Rabbi in the summer of 2015. He was born and raised in Buenos Aires, Argentina. He completed two undergraduate degrees, in Bible and in Jewish Thought, from Haifa University in Israel. He received his rabbinic ordination in 2003 from the Seminario Rabínico Latinoamericano in Buenos Aires. Most recently, he served for seven years as Rabbi of Beth Israel Synagogue in Roanoke, Virginia, and

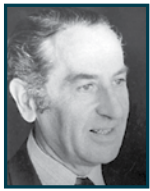
he holds certification as an elementary and high school teacher. He has taught in our Adult Institute and is also teaching adult classes in Bible and Introductory Judaism at Beth El.

**THE RABBI SAMUEL SCOLNIC ADULT INSTITUTE COMMITTEE
FOUNDED IN 1977 IN MEMORY OF SAUL BENDIT**

Jack Ventura, Chair • Al Fox, Chair Emeritus z"l

- | | |
|----------------------|---------------------|
| Stanley Baldinger | Rhoda Nichaman |
| Steven Frank | Irwin Pernick |
| Sara Gordon | Mark Schifrin |
| Marilyn Hammerman | David Schultz |
| Rabbi Gregory Harris | Judy Scolnic |
| Mindy Hecker | Howard Stein |
| Miriam Israel | Ginger Teitel |
| Ilene Jacobowitz | Stephanie Ventura |
| Hazzan Matthew Klein | Rabbi Fabián Werbin |
| Rita Kopin | Lew Winarsky |

RABBI SAMUEL SCOLNIC (1923-2012) z"l served as Beth El's first full time Rabbi for 32 years, and as Rabbi Emeritus until his death in 2012. He founded the Saul Bendit Adult Institute and taught in the Institute from its inception in the Fall of 1977. The Institute is now known as the Rabbi Samuel Scolnic Adult Institute. Rabbi Scolnic held advanced degrees from the Jewish Theological Seminary. He was the founder and first President of the National Association of Retired Conservative Rabbis. He taught and lectured widely at area synagogues and at the Isaac Frank Jewish Public Library and other venues. Rabbi Scolnic received the Sheva R. and Marver R. Bernstein Master Teacher Award from the Foundation for Jewish Studies.



SAUL BENDIT (1913-1976) z"l was a resident of our Washington community for 37 years and an active participant in both Jewish and non-Jewish affairs. He had a deep love for Jewish culture and was very proud of his people and his faith. We are deeply indebted to his late wife Tanya and their family for underwriting the Adult Institute for many years after its inception.

REGISTRATION AND OTHER INFORMATION

DATES FOR FALL TERM: Classes will meet at Beth El on six Tuesday mornings, November 1, 8, 15, and 29; and December 6 and 13; and six Wednesday evenings, November 2, 9, 16, and 30; and December 7 and 14. There are no classes November 22 and 23. All classrooms are fully accessible by elevator.

REGISTRATION FORM: Please register online at: <http://www.bethelmc.org> or complete and return the form below with your remittance. **Online** registration is available for members and non-members.

REMITTANCE: If registering online, follow payment instructions. If registering by mail, please make check payable to BETH EL.

IMPORTANT: FOR EARLY BIRD DISCOUNT, PAYMENT FOR REGISTRATION MUST BE RECEIVED EITHER ONLINE OR BY MAIL, BY OCTOBER 21.

PLEASE MAKE A NOTE of the courses for which you register; registration acknowledgments are not sent.

MINIMUM REGISTRATION REQUIREMENT: Ten students.

IF WEATHER IS SEVERE: Classes will not meet when Montgomery County Schools are closed because of inclement weather. Information on Rabbi Samuel Scolnic Adult Institute closing will be available on a taped message after 7 AM for Tuesday classes and after 5 PM for Wednesday classes; call 301-652-2606. As soon as the message starts, press "3" to retrieve closing information.

THE EVENING MINYAN WILL START AT 8:20 PM (rather than 8:00) on evenings when Institute classes are scheduled.

QUESTIONS? Call 301-652-2606, Ext. 349, or send an email to samuelscolnic@bethelmc.org.

THE RABBI SAMUEL SCOLNIC ADULT INSTITUTE
FOUNDED IN 1977 IN MEMORY OF SAUL BENDIT

COURSE FEE INFORMATION—

Early Bird registration – payment must be received by October 21, 2016:

Wednesday evening classes:

- Each 6-week, 50-minute course..... \$35/member; \$40/nonmember

Tuesday morning classes:

- Each 6-week, 50-minute course (or five 1-hour sessions)...\$30/member; \$35/nonmember

Regular registration – payment received on October 22 or later:

Wednesday evening classes:

- Each 6-week, 50-minute course.....\$40/member; \$45/nonmember

Tuesday morning classes:

- Each 6-week, 50-minute course (or five 1-hour sessions)...\$35/member; \$40/nonmember

REGISTRATION INFORMATION

REGISTER ONLINE OR COMPLETE THIS FORM — *PLEASE PRINT*

Registrant(s) home address:

Address _____

City _____ **State** _____ **Zip + 4** _____ - _____

Home Phone _____

Please register me (us) for the following course(s)

1. Registrant's name _____ Beth El member? _____

Course(s) Tues, AM _____ \$ _____

Tues, AM _____ \$ _____

Wed, PM _____ \$ _____

Wed, PM _____ \$ _____

For urgent class information: E-mail _____

Phone: _____

2. Registrant's name _____ Beth El member? _____

Course(s) Tues, AM _____ \$ _____

Tues, AM _____ \$ _____

Wed, PM _____ \$ _____

Wed, PM _____ \$ _____

For urgent class information: E-mail _____

Phone: _____

Enclosed is a check, payable to BETH EL, for a total of: \$ _____

RABBI SAMUEL SCOLNIC ADULT INSTITUTE
FOUNDED IN 1977 IN MEMORY OF SAUL BENDIT
CONGREGATION BETH EL OF MONTGOMERY COUNTY
8215 OLD GEORGETOWN ROAD
BETHESDA, MD 20814-1451

Non-Profit
U.S. Postage
PAID
Suburban, MD
Permit No. 7007

REMINDER! Classes begin Tuesday and Wednesday, NOVEMBER 1 AND 2.

